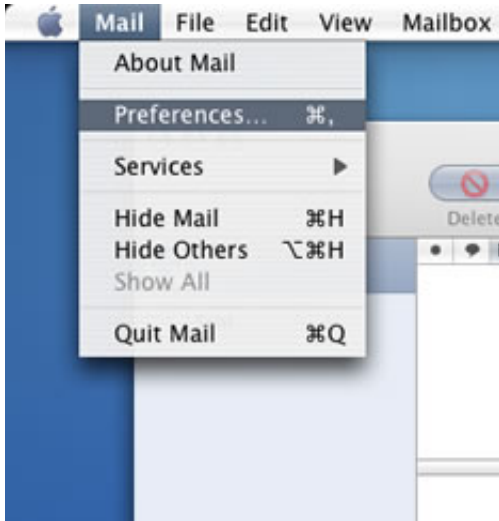
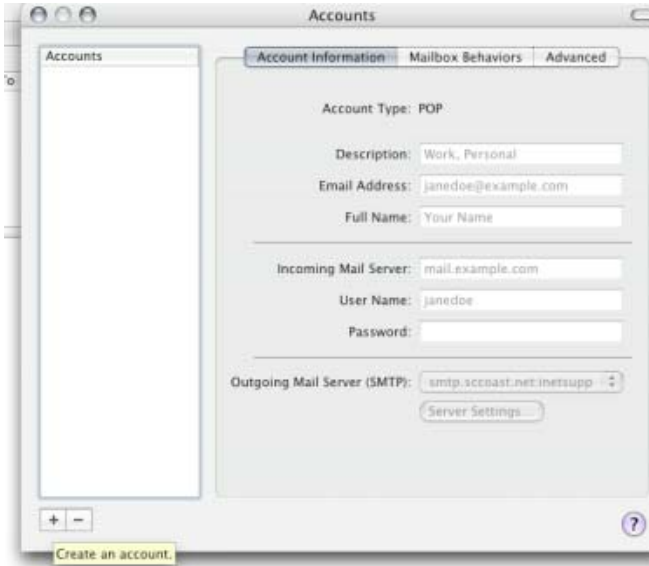


## Set up an Entourage (Mac Mail) account to work with HTC Email powered by Google™

1. Open your Mac Mail
2. Click on the **Mail** menu
3. Select **Preferences**



4. Click on the + at the bottom left of this screen



5. On the **Accounts** screen select the **Account Type: POP**
6. The **Account Description** should say **POP Account**
7. Enter the remaining Information (email address as provided by HTC)
8. Click on **Continue**



9. Enter the **Incoming Mail Server as: pop.gmail.com**
10. Complete the **User Name** with your HTC assigned user name and include @sccoast.net
11. Enter the **Password** that was assigned to your account by HTC
12. Click on **Continue**



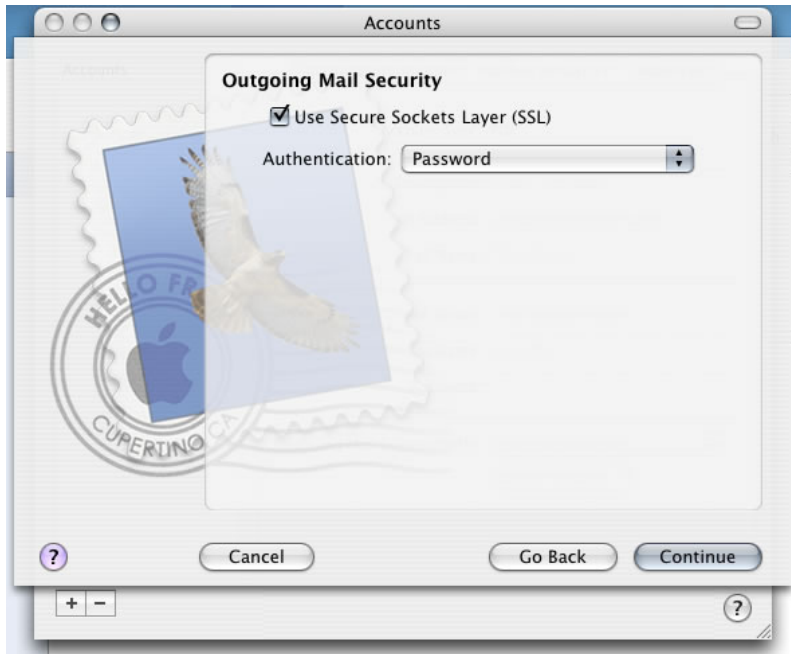
13. Check the box **Use Secure Sockets Layer (SSL)**
14. Select **Authentication:** Password
15. Click on **Continue**



16. Your HTC **Outgoing Mail Server** is: **smtp.gmail.com**
17. Check the box **Use Authentication**
18. Complete the information and click on **Continue**



19. Check the box **Use Secure Sockets Layer (SSL)**
20. Select **Authentication:** Password
21. Click on **Continue**



22. Ensure that your **Account Summary** is correct  
**Incoming Mail Server: pop.gmail.com**  
**SSL: on**  
**Outgoing Mail Server: smtp.gmail.com**  
**SSL: on**
23. Click on **Continue**



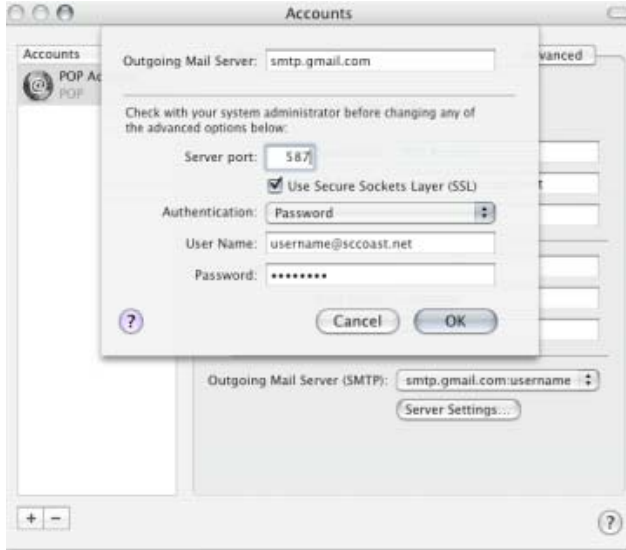
24. Click **Done** you will be returned to your Accounts Page



25. *Just a few more steps!* Click **Server Settings** button



26. Check the box for **Use Secure Sockets Layer (SSL)**
27. Change your **Server port** to: **587**
28. Make sure your Username and password are correct
29. Click **OK**



30. You will now be returned to your Account Screen
31. Close this screen and your email account will be changed

