

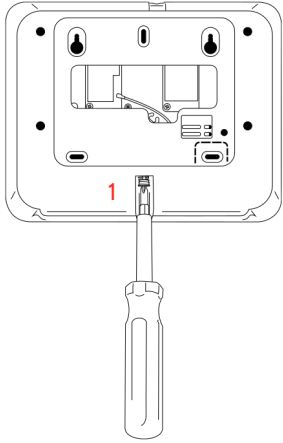
SECURITY & SMARTHOME

We hope you enjoy your new IQ Panel security and smart home platform. It will serve as the “brain” of your home for many years to come. With it you can control your lights, locks, thermostat, security and much more.

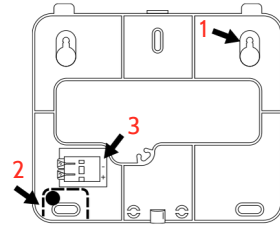
You won't need a manual to operate your IQ Panel, but you can use this guide to learn more about the features of this amazing new device. We hope it will add to your home's decor and make your home smarter and more energy efficient!

IQ PANEL 4 QUICK GUIDE

1 WALL MOUNT



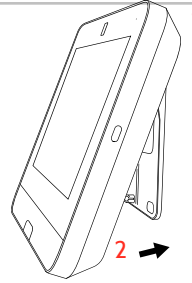
1. With a small phillips screwdriver, undo the locking screw from the back of the panel, remove the SmartMount backplate.



1. Mount the backplate to the wall using appropriate hardware ensuring it is level.

2. A screw is required in break-away wall tamper for UL 2610.

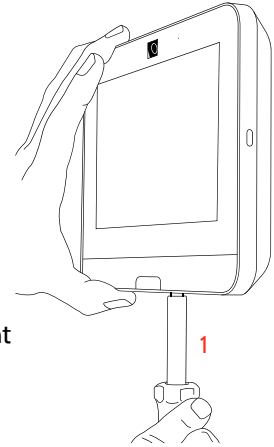
3. Connect the power supply to the barrel jack on the back of the panel or to the (+) and (-) terminals on the backplate if using a custom length wire.



1. Latch the top of the IQ Panel 4 onto the SmartMount backplate

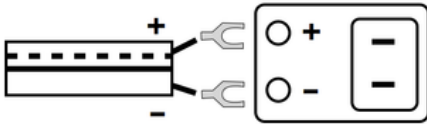
2. Swing the panel down towards the backplate and press firmly against the wall.

If using a custom length wire, power terminals will automatically connect and provide power to the IQ Panel.



1. With a small phillips screwdriver, screw in the locking screw from the bottom of the panel to secure it to the wall.

2



Connect power supply
WARNING! Use 7vDC Power Supply ONLY

3



Press and hold the power button on the right side of the panel for 3 seconds to power up

4



CREATE ACCOUNT

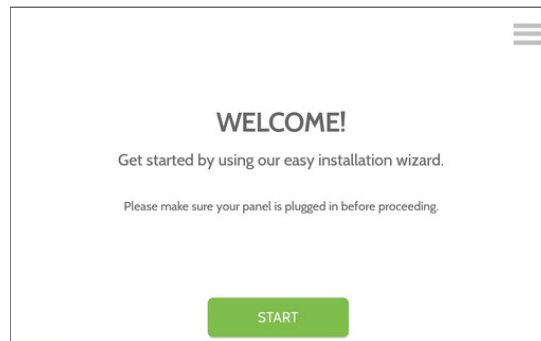


TRY THE MOBILE TECH APP

5 ON SCREEN SETUP WIZARD (Auto Launch)

Once the panel powers up the on-screen wizard will automatically appear.

Follow the prompts to complete your installation.



SETUP WIZARD (Manual Launch)



Tap to access settings tray



Settings



Advanced
(default installer password is 1111)



Setup Wizard
(Launch Wizard)

UL/cUL Residential Fire and Burglary and UL/ULC Commercial Burglary Alarm Control Unit
Conforms to ANSI/UL Standards UL985, UL1023, & UL2610

Certified to ULC Sub. S545 & ULC Std. S304

Doc#: IQP4-QG-04-21 Rev Date: 04/30/21

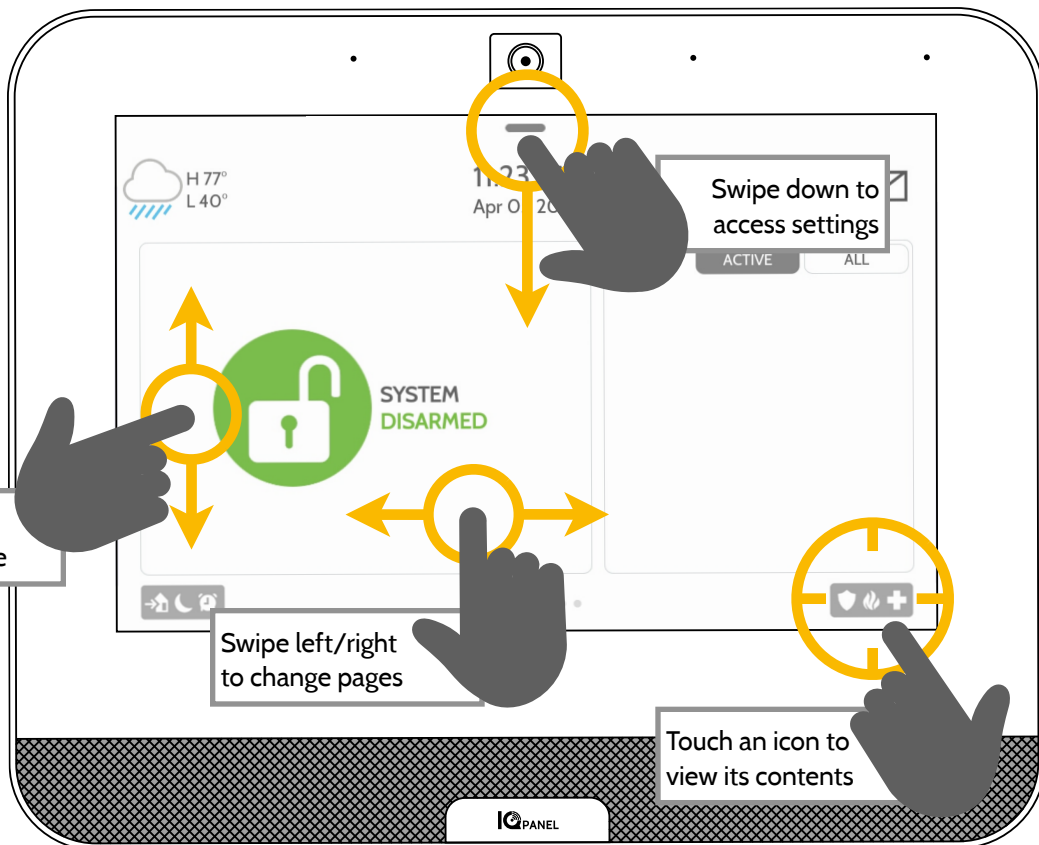


Qolsys, Inc. proprietary. Reproduction without written consent is not permitted.

USING YOUR SYSTEM: BASICS

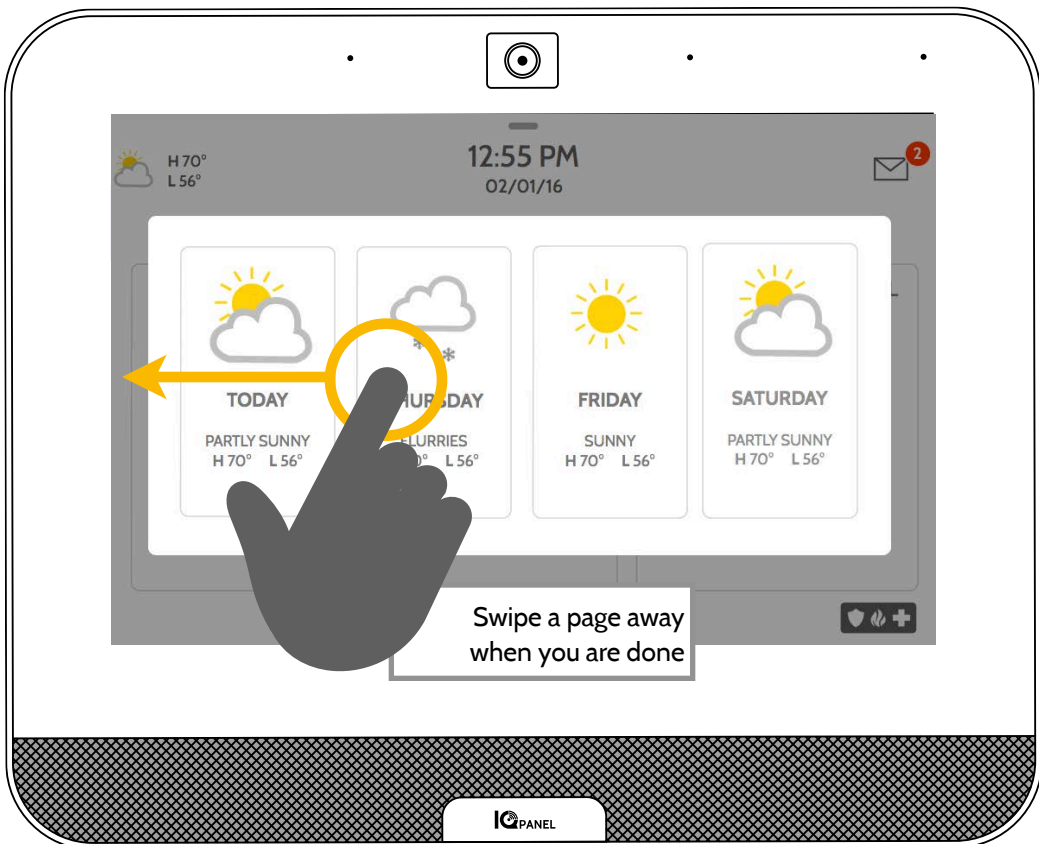
Navigation

Move from page to page and access information on each page using finger touches, swipes, and scrolling.

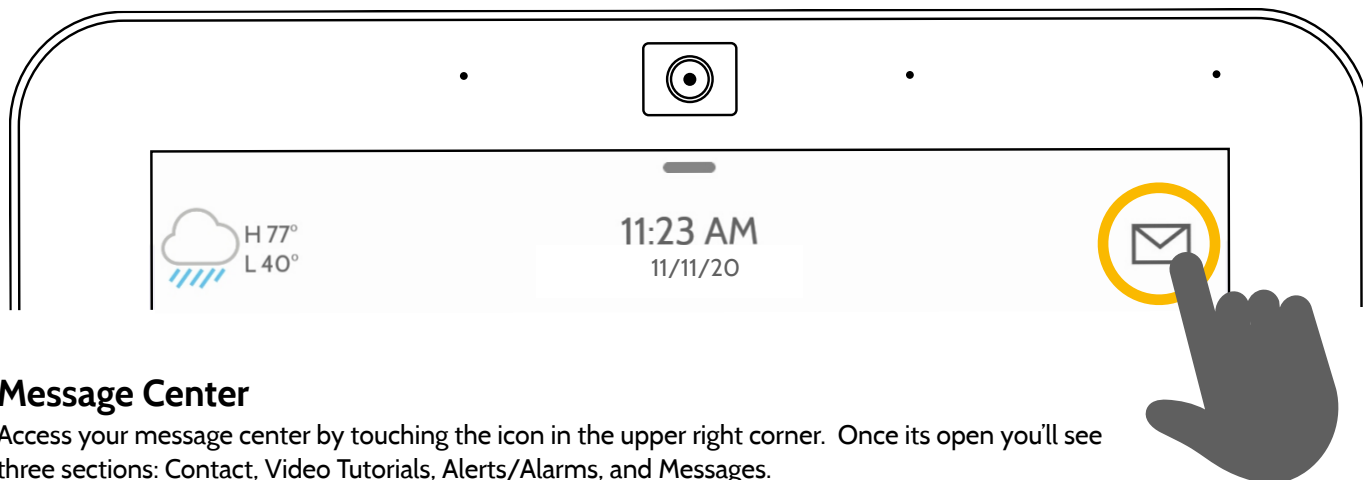


Dismiss

To dismiss a pop up when you are done, swipe left or right to dismiss.



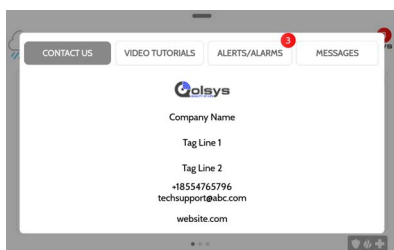
USING YOUR SYSTEM: MESSAGE CENTER



Message Center

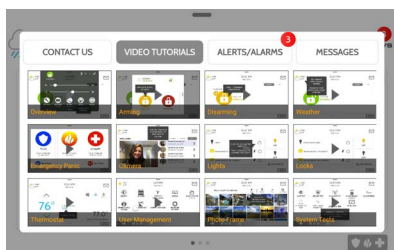
Access your message center by touching the icon in the upper right corner. Once its open you'll see three sections: Contact, Video Tutorials, Alerts/Alarms, and Messages.

(Note: This icon may appear different than shown, depending on your provider's settings)



Contact

Easy access to your provider's contact information, including phone number, email, and website.

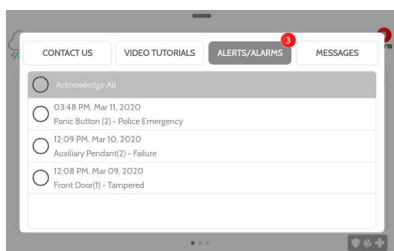


Video Tutorials

Watch videos to help you understand your system and service better.

To watch a video, touch a thumbnail. Video will begin playing automatically.

Video controls appear on screen. To exit, touch the "back" button.

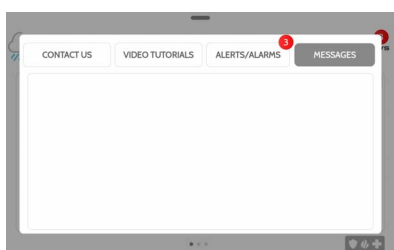


Alerts/Alarms

Alerts and alarms from your system like low battery alerts, alarms, and power failures.

To dismiss, touch the circle to the left of the message and touch "OK" to remove it from your message center.

You can also remove all messages at once by touching "Acknowledge All"



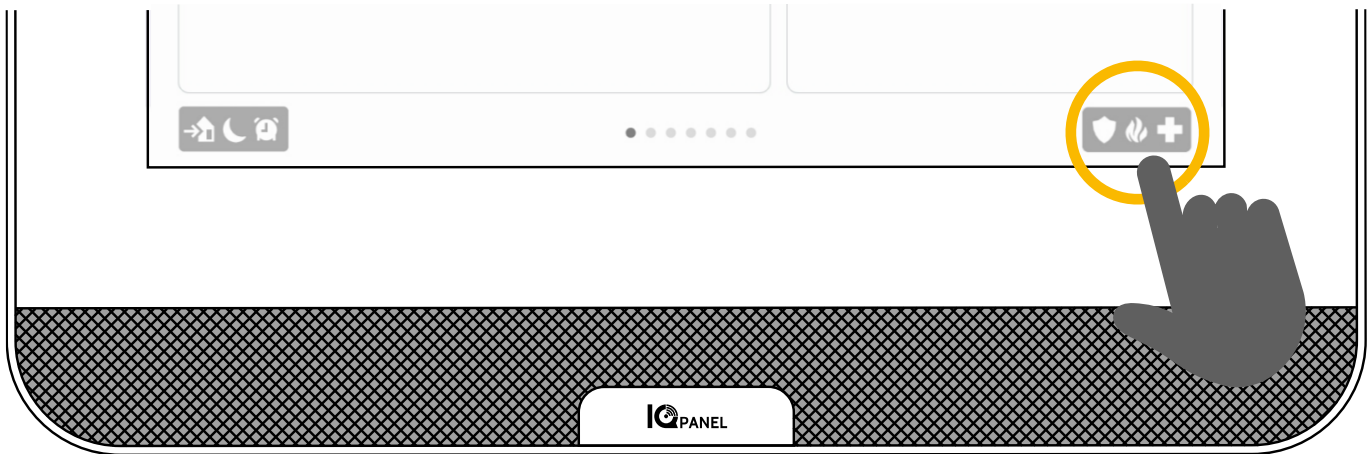
Messages

Messages from your provider will also appear here.

To dismiss, touch the circle to the left of the message and touch "OK" to remove it from your message center.

You can also remove all messages at once by touching "Acknowledge All"

USING YOUR SYSTEM: EMERGENCY PANIC



Emergency Panic

If you have a police, fire, or medical emergency and your system is not armed or a sensor has not been triggered, you can send a manual emergency panic by touching the icon in the bottom right corner and selecting the type of emergency you are experiencing. (Note: based on your location, not all options may appear or be available to you.)



This is the central monitoring station, how can I help you?

Two-Way Voice

If your provider offers Two-Way Voice service you'll be able to speak to the monitoring agent from the speakers and microphone built right into your panel.



To send a police or emergency panic without sounding the siren, using the "Silent Alarm" at the bottom of the screen

Alarm Types



Police: When touched it triggers the "Police" siren pattern and sends a police emergency signal to your provider's monitoring station.



Fire: When touched it triggers the "Fire" siren pattern and sends a fire emergency signal to your provider's monitoring station.

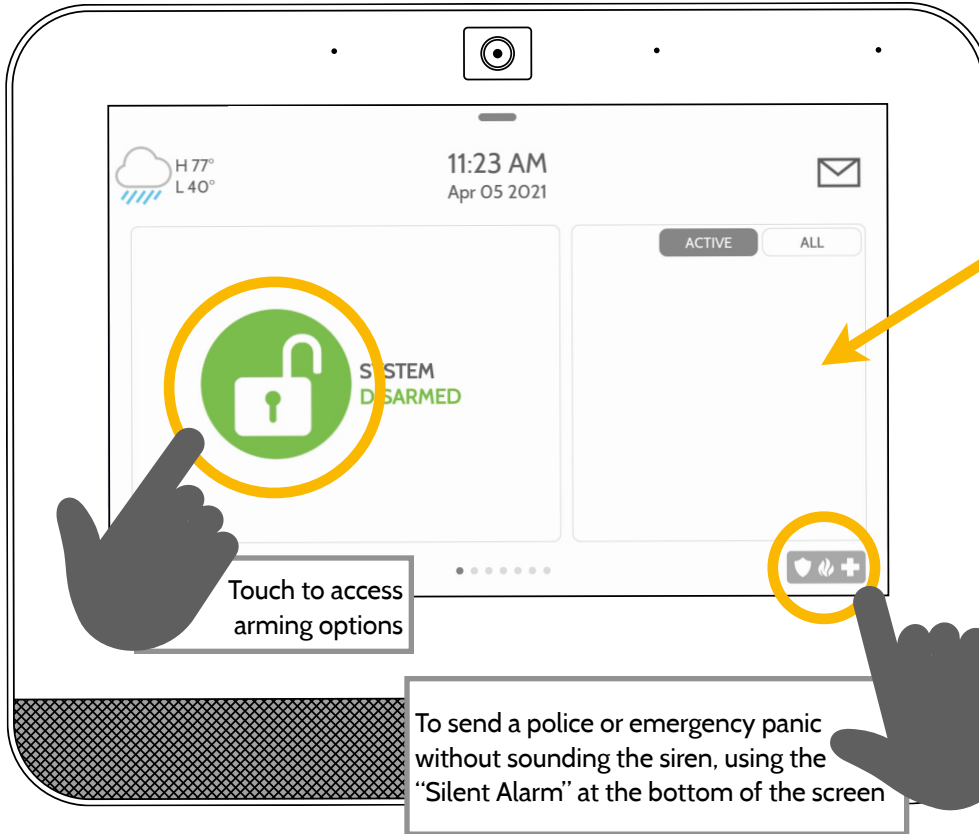


Emergency: When touched it triggers the "Emergency" siren pattern and sends an emergency signal to your provider's monitoring station.



Canceling an Emergency Panic
To cancel an emergency panic, touch the "cancel" button and enter a valid user code.

USING YOUR SYSTEM: ARMING

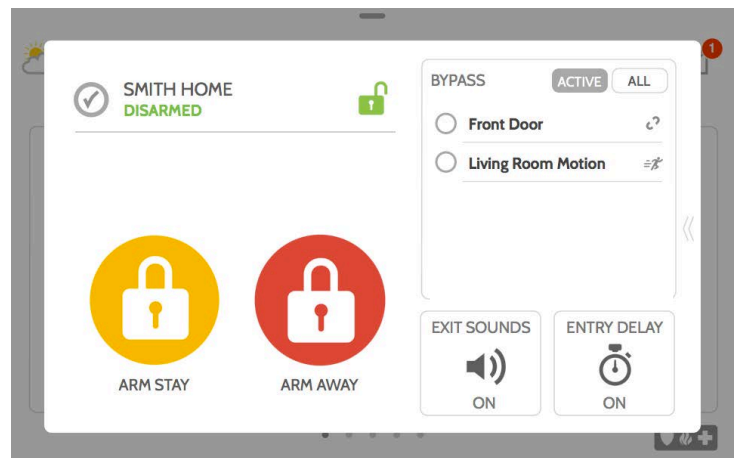
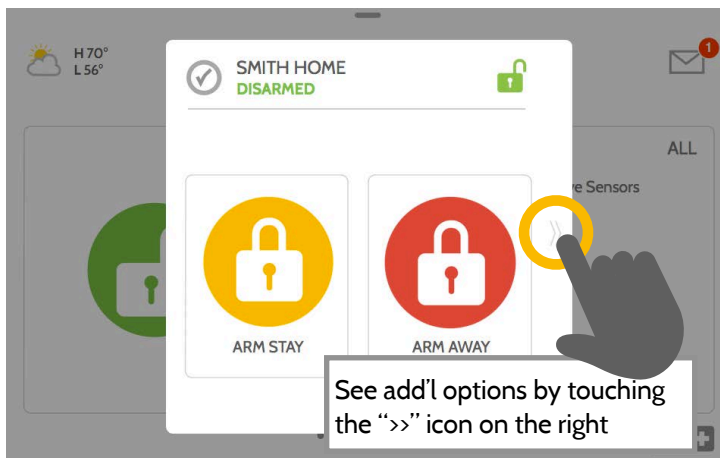


Sensor List

Open or active sensors appear in a scrollable list on the right. Touch the icons in the upper right corner to switch your view to either "Active" or "All" sensors.

Sensor status:

- Open
- Closed
- Active
- Idle
- Unreachable
- Tampered
- Synchronizing
- Not Networked



Arming Options

Quickly choose from "stay" or "away"



Arming Stay

Arms doors and windows only



Arming Away

Arms doors, windows and motions



Additional Options

View additional arming options by touching the ">>" icon on the right side.

Additional Arming Options

Select these options before choosing your arming type



Bypass

Touch the circle next to a sensor to bypass it during the arming sequence



Exit Sounds

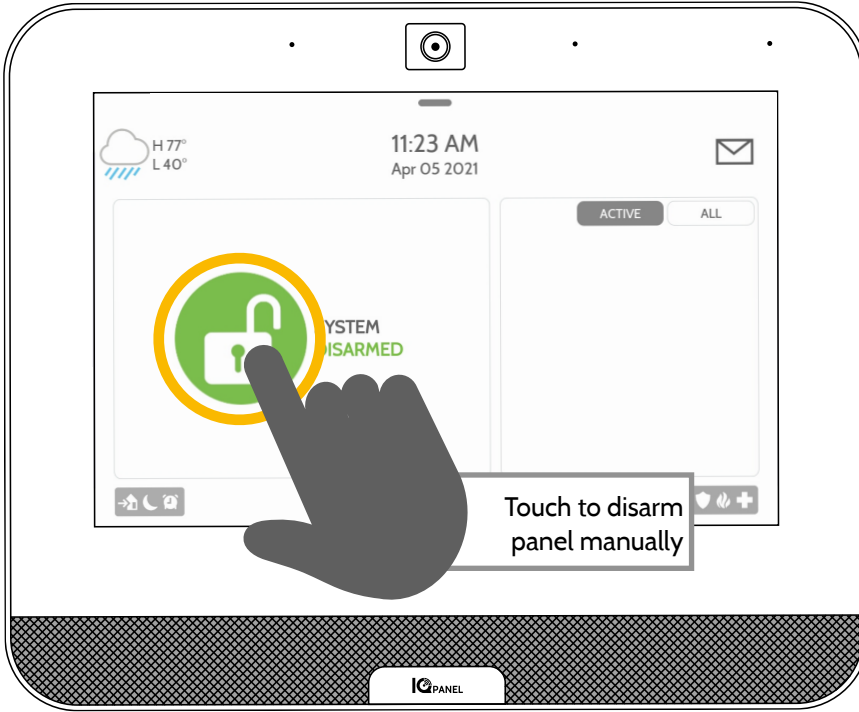
The panel beeps as the timer counts down. Silence these beeps before you choose the arming type.



Entry Delay

The panel will give you time to disarm once a "delay door" has been opened. Turn this off with a touch.

USING YOUR SYSTEM: DISARMING




Disarming your System

When your system is armed, there are multiple ways to disarm:

Disarming Manually

To manually disarm your panel, touch the icon in the center of the screen. You will be prompted to enter a valid code. Failure to enter a valid code with the time required will trigger the alarm.

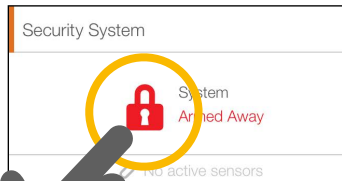
 When someone manually disarms the panel the built in camera will take a photo and save it on the camera page along with the date, time, and name of the user.

Disarming Remotely


To remotely disarm your panel, login to your mobile app and touch the "disarm" icon.



Download the Alarm.com app in the App store or Google Play

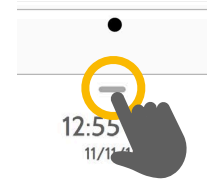


Disarming Automatically

 You can connect your smartphone using Bluetooth and it will automatically disarm your IQ Panel from an "Armed Away" state when it comes within range. To connect a phone, follow the steps shown.



Bluetooth Touchless Disarming



Step 1:
Swipe down to access settings tray



Step 2:
Touch "SETTINGS"



Step 3:
Touch "ADVANCED SETTINGS"




Step 4:
Enter your code



Step 5:
Touch "BLUETOOTH DEVICES"

Step 6:
Put your Bluetooth device in "pairing" mode.

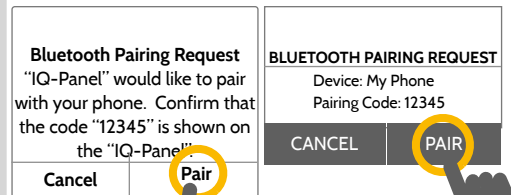
Step 7:
 Touch "ADD DEVICE" The panel will begin searching for new devices in range (It may take up to 60 seconds)

Step 8:
Select your device from the list



Step 9:
Touch "Pair"

Step 10:
When the messages appear on your phone and IQ Panel, ensure the numbers match and touch "Pair" on each.

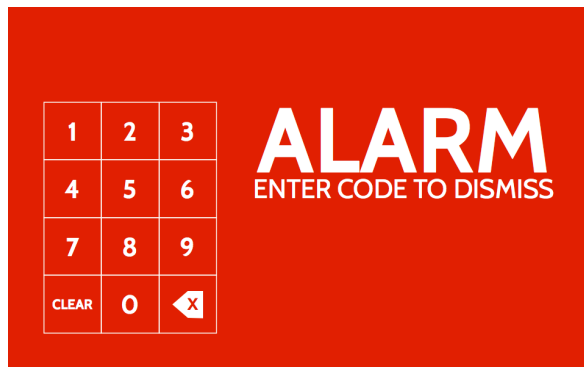


**You can connect up to five (5) smartphones for touchless disarming. You may need to enable this setting in your Bluetooth settings.*

ALARM EVENTS

Alarms

If the alarm is triggered the IQ Panel will sound the siren and display a red alarm screen.



If your provider offers monitoring service, the panel will automatically contact your monitoring center using the dual path LTE and Wi-Fi connection.

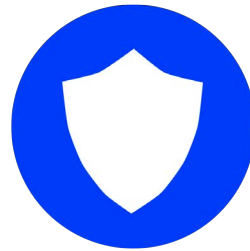
To disarm, touch the screen and enter your passcode.

Two Way Voice

The built in microphones on the top of the panel and the Two-Way Voice speakers on the bottom of the panel activate after a connection to the monitoring station has been made.

False Alarms

In the event of a false alarm, press disarm and enter your user code. If your system is monitored, be ready to provide your verbal password to your security provider's monitoring agent if they contact you. If you are NOT able to provide the correct verbal passcode, the authorities may be contacted.



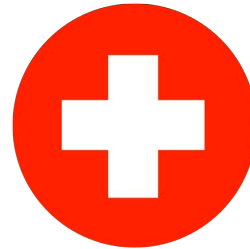
Police

When the system is armed and the alarm is tripped or you touch the "Police" emergency button the alarm sounds with the "Intrusion" siren and then activates the Two-Way Voice microphone and speaker, if available.



Fire

When a Smoke or Carbon Monoxide detector is triggered or someone taps the "Fire" panic on the IQ Panel the alarm sounds with the "Fire" siren and then activates the Two-Way Voice microphone and speaker, if available.



Emergency

When you press an IQ Pendant or trigger an emergency signal from the IQ Panel, the alarm sounds with the "Emergency" siren and then activates the Two-Way Voice microphone and speaker.

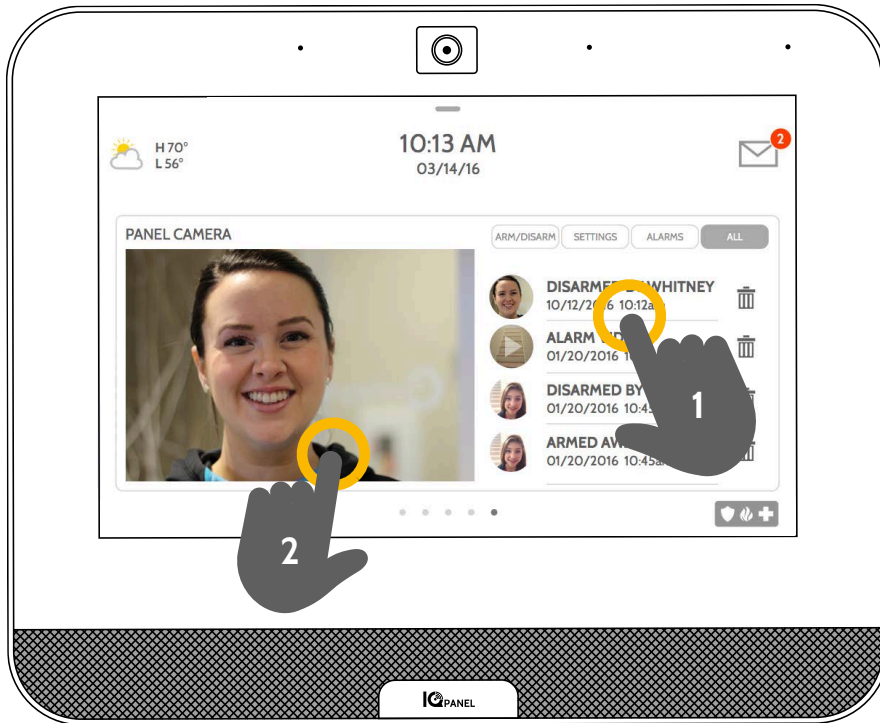
Preventing false alarms:

False alarms are a terrible waste of your public service resources, and can erode your relationship with local authorities. In some areas, authorities even charge a fee for false dispatches.

Here's some tips for avoiding false alarms:

- Use your system regularly, be comfortable with its operation.
- Make sure everyone who has access to your home has a valid access code and is familiar with how to use the system.
- Ensure the doors you use the most are set up with delays to give you enough time to disarm the system when you open a door.
- Test your system regularly
- Develop a routine.
- Use alternative methods for arming and disarming (mobile app, bluetooth disarming, etc.)

USING YOUR SYSTEM: CAMERA



Camera Page

Your IQ Panel's built in camera captures photos in a variety of situations:



Disarm Photos

When the panel is disarmed manually, the built in camera takes a photograph and saves it in the "ARM/DISARM" section. These photos are accompanied by the username of the individual who's code was used, the date, and the time.



Settings Photos

When someone attempts to access your panel settings with an invalid code, the built in camera takes a photograph and saves it in the "SETTINGS" section. These photos are accompanied by the date and time.



Alarm Photos

When the alarm is triggered, the built in camera takes a photograph and saves it in the "ALARMS" section.



Alarm Videos

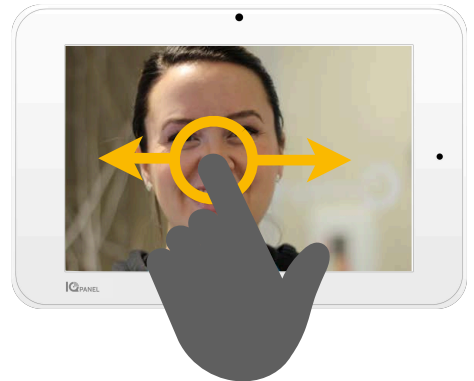
When the alarm is triggered, the built in camera will record up to a 4 minute video clip. This video is stored locally on the panel only.

1- View Photo

Touch a photo thumbnail on the right to view it on the left.

2- Full Screen

Touch the photo on the left to view it full screen. Touch it again to return to the camera page.



Note: While viewing photos full screen you can swipe left/right to view additional photos

Photos to your Phone



Customer Login

Password

Sign In

Remember Me [Login Help?](#)

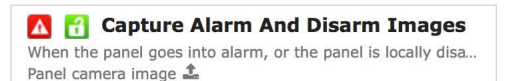
Alarm.com/Login
Get your username and password from your provider



Click the "Images" tab

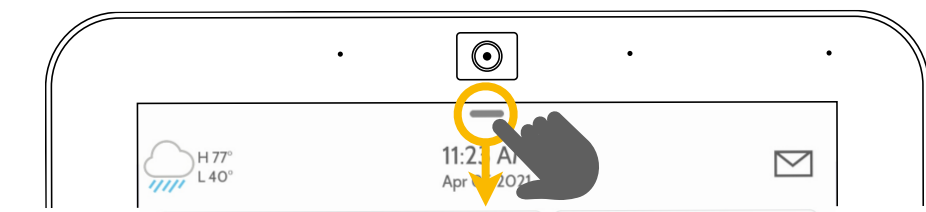


Click "Rules & Alerts"



Click "Capture Alarm And Disarm Images" to customize

USING YOUR SYSTEM: SETTINGS



Settings Tray

Access common settings by swiping down from the top of the screen.

Security Status

See your panel's security status in the upper right. Touch it to go directly to the security page

Volume

Slide left/right to adjust the panel voice

Settings

Touch to access the full settings page. From there you can also access "Advanced Settings" (which will require a passcode)

Messages & Alerts

Touch to access the message center including your provider's contact information, video tutorials, and system messages

Photo Frame

Touch to access the photo frame where you can customize the panel's screensaver

Close Tray

Swipe up to close the tray

Battery & Radios

Touch an icon to get more information
-Battery level
-Wi-Fi connection
-Bluetooth status
-LTE connection

Brightness

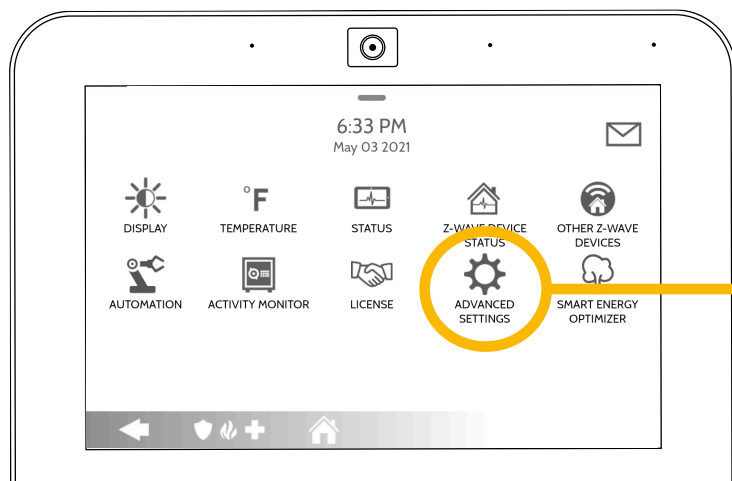
Slide left/right to adjust the screen brightness

Language

Touch to change panel language

Clean Screen

Disables the screen for 30 seconds to allow you to clean it without accidentally touching anything. (Touch the "standby" button on the side of the panel to cancel)



Settings Page

From here you can adjust individual sound settings, change your weather temperature from Fahrenheit to Celsius, see the status of your security and smart home devices, and more.

Advanced Settings

Only the Master code can access this area. From here you can manage users, run system tests, reboot your system, connect Bluetooth and Wi-Fi and more.

SETTINGS: PHOTO FRAME

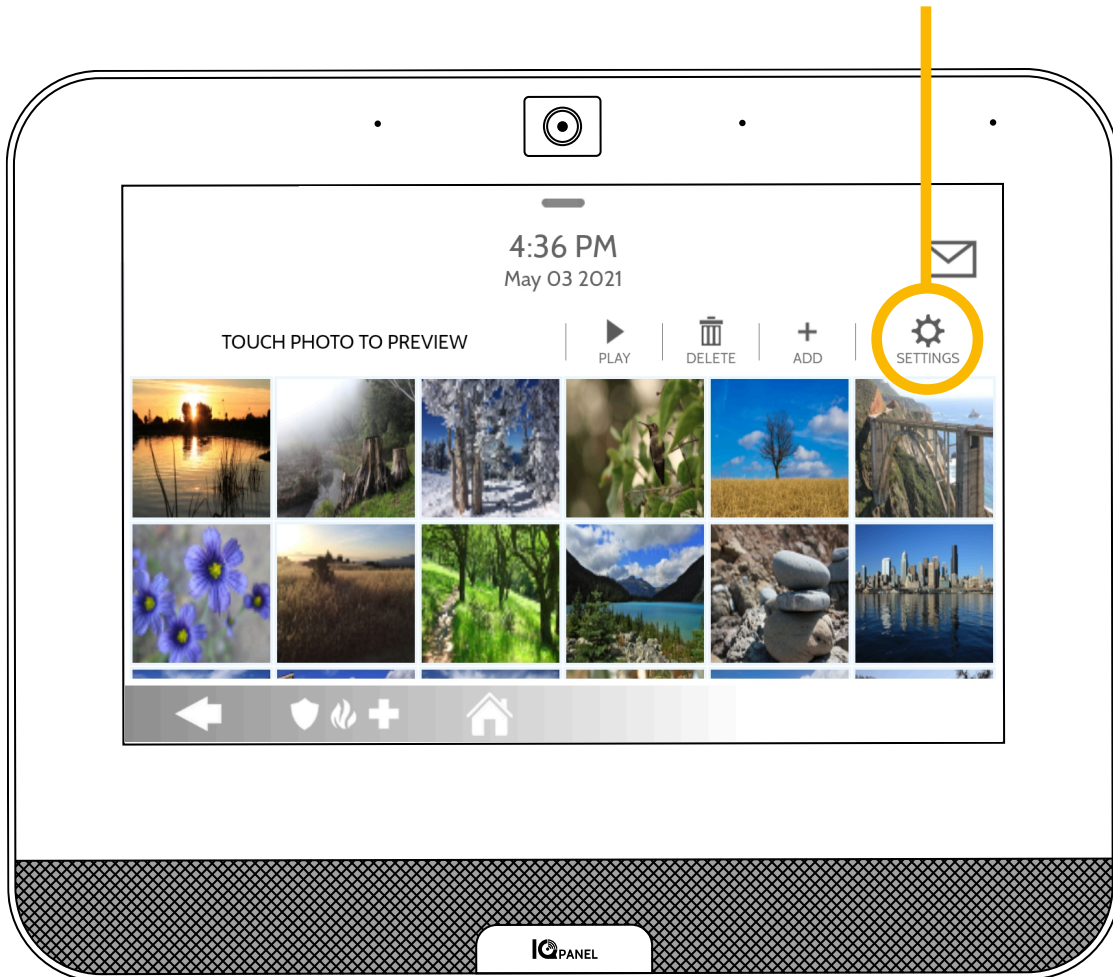
Photo Frame

When your panel is not in use, it turns into a customizable photo frame.



Settings

Inside settings you can choose whether you want photos or a weather clock, if you want the panel to turn itself off automatically in the evenings, and more.



SETTINGS: ADDING A USER

User Types

You can add up to 242 users to your system, each with a custom name and access level you allow.

Master: Access panel functions, camera, and system settings.

User: Access panel functions, camera, but NOT system settings.

Guest: Used to give arm and disarm access to those users who will use the panel on a temporary basis

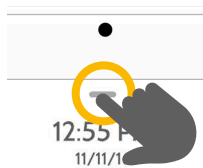
Expiration Date: Choose a specific date that will disable a user code automatically.



Notifications

By creating individual users, you can set up custom text notifications when they access or use your system, keeping you connected no matter where you are.

How to Add a New User



Step 1:
Swipe down to access settings tray



Step 2:
Touch "SETTINGS"



Step 3:
Touch "ADVANCED SETTINGS"



Step 4:
Enter your code*



Step 5:
Touch "User Management"



Step 6:
Touch "Add User"

| | | | |
|------------|---|-------------------|--|
| First Name | <input type="text" value="Enter First Name"/> | Last Name | <input type="text" value="Enter Last Name"/> |
| User Code | <input type="text" value="Please enter User Co"/> | Confirm User Code | <input type="text" value="Please confirm US"/> |
| Type | <input type="text" value="User"/> | Expiration Date | <input type="text" value="Unlimited"/> |

Add User Screen

Once on the "Add User" screen you can create a custom name and user code and indicate whether you want this person to be a Master, User, or Guest.

*Default master code is 1234. For security purposes this code should be changed once the system has been installed in your home

SETTINGS: TESTING YOUR SYSTEM

Testing Regularly

You should test your system regularly to ensure it is operating at peak efficiency. The IQ Panel has a number of tests built in that are easy to perform:



Wi-Fi Test

Run this test every 30 days or if the IQ Panel's Wi-Fi connection seems to be failing.



Sensor Test

Run this test every 30 days. As you start the test, open and close your doors, windows, and move in front of your motion sensors to ensure they work as expected.



Cellular/LTE Test

Run this test if your panel seems to have lost its ability to send and receive signals.



Image Sensor Config

Run this test if your image sensors stop working



Z-Wave Test

A series of Z-Wave tests to optimize your smart home network. "Reconfigure network" is your most useful test, repairing your network for you.



Dual Path Test

Run this test if your panel seems to have lost its ability to send and receive signals.



Panel Glass Break Test

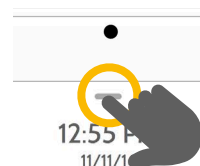
Use this to test your panel's microphone



Panel Test

Use this every 30 days to test a variety of panel functions

How to Access System Tests



Step 1:

Swipe down to access settings tray



Step 2:

Touch "SETTINGS"



Step 3:

Touch "ADVANCED SETTINGS"



Step 4:

Enter your master code*



Step 5:

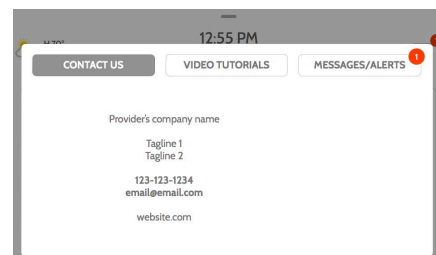
Touch "System Tests"

Encounter a Problem?

If you encounter a problem with your system, contact your provider right away.



Touch "Message Center" in the upper right corner of your panel to get your provider's contact information

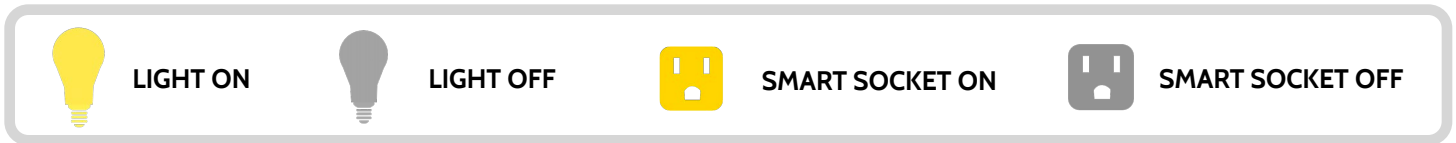


*Default master code is 1234. For security purposes this code should be changed once the system has been installed in your home

USING YOUR SYSTEM: LIGHTS

Light Control

You can add up to 80 Z-Wave lights, lamp modules, or lightbulbs to your IQ Panel. This will allow you to control your lights locally on the panel and also from your mobile app. Once your first light is added to your system, the lights page will appear. Simply swipe over to access it.

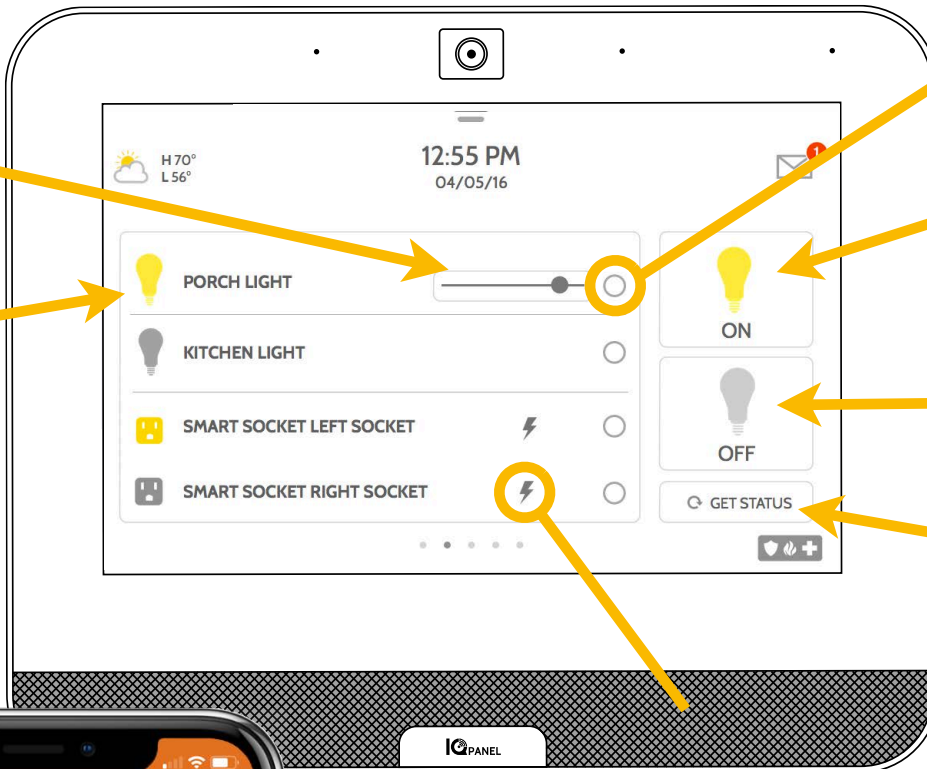


Dimmer

Touch the slider from left to right to adjust the brightness of a single dimmer

ON/OFF

Touch a bulb or outlet icon to turn it on or off



Select

Touch the circle next to a light to select it

ON

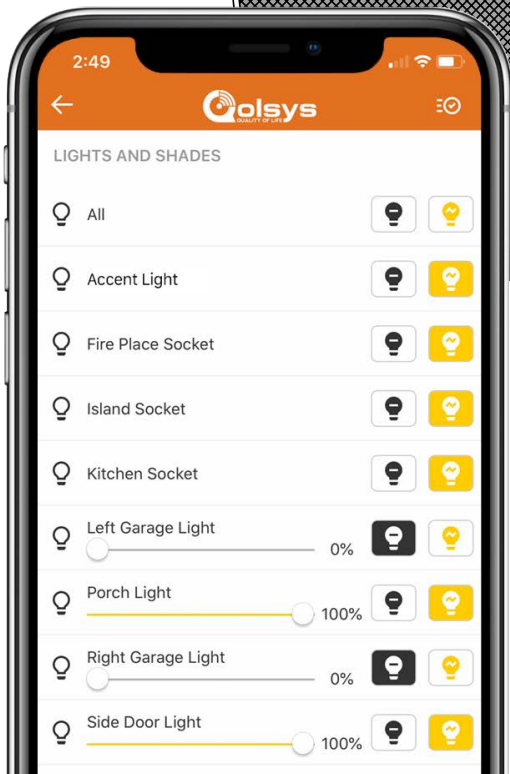
Touch turn on all selected lights

OFF

Touch turn off all selected lights

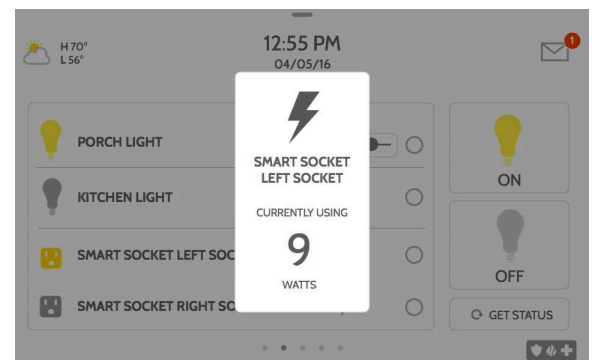
GET STATUS

Touch to check the status of all selected lights



Energy

Touch the energy icon to see how much energy the outlet is currently using




Mobile Access

You can also control your lights from your mobile app.

USING YOUR SYSTEM: LOCKS

Lock Control

You can add up to 6 Z-Wave locks to your IQ Panel. This will allow you to control your locks locally on the panel and also from your mobile app. Once your first lock is added to your system, the lock page will appear. Simply swipe over to access it. If you have more than one lock swipe up and down to access each one.



ON/OFF
Touch the key icon to unlock or lock it

Change Locks
If you have more than one lock, swipe up and down to access each one.

Get Status
Touch the refresh icon to check the lock's current status

UNLOCK ALL
Touch to unlock all your locks at once

LOCK ALL
Touch to lock all your locks at once

The diagram shows the IQ Panel interface with a large green key icon for the 'FRONT DOOR UNLOCKED' status. A refresh icon is circled in yellow. Arrows point from the text labels to the corresponding UI elements on the panel screen.



Mobile Access
You can also control your locks from your mobile app.

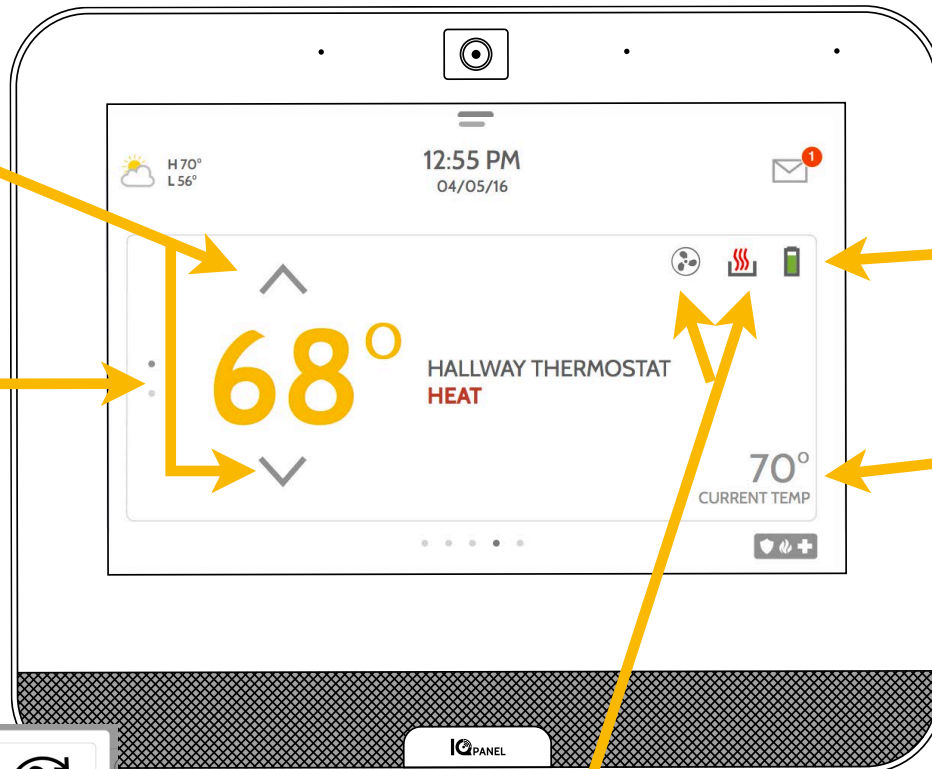
USING YOUR SYSTEM: THERMOSTAT

Thermostat Control

You can add up to 10 thermostats to your IQ Panel. This allows you to control the temperature in your home locally on the panel and also from your mobile app. Once your first thermostat is added to your system, the thermostat page will appear. Simply swipe over to access it. If you have more than one thermostat swipe up and down to access each one.

Up/Down
Touch the arrows to adjust the target temperature

Switch
If you have more than one thermostat, swipe up and down to access each one.

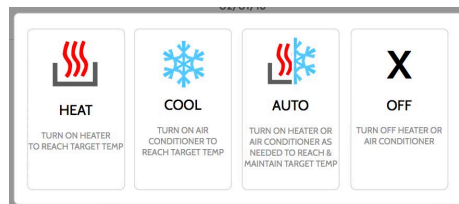


Battery level
Displays how much battery is left in your thermostat

Current Temp
Displays the current temperature in your home



Fan
Touch to change to "On" or "Automatic"



Mode
Touch to change this thermostat from heat to cool (or off) or use "automatic" which switches from heat to cool as needed to maintain your target temperature.



Mobile Access
You can also control your thermostat from your mobile app.

USING YOUR SYSTEM: GARAGE DOOR

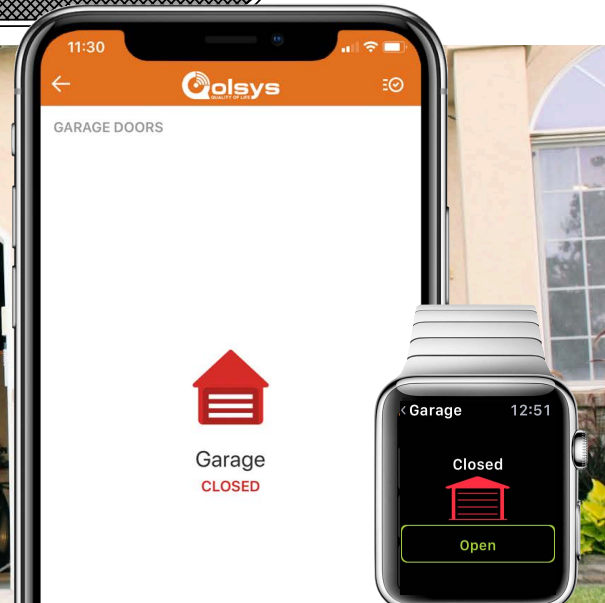
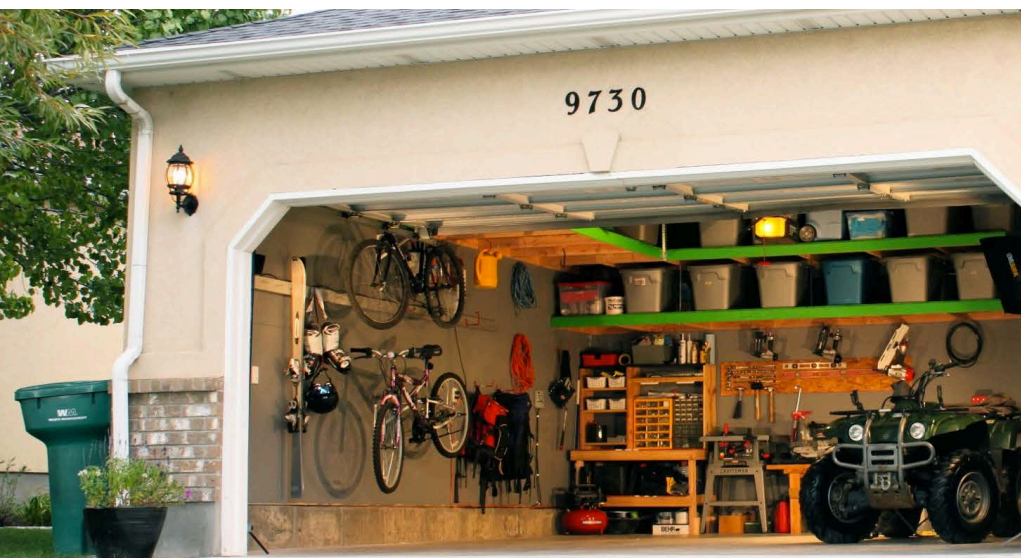
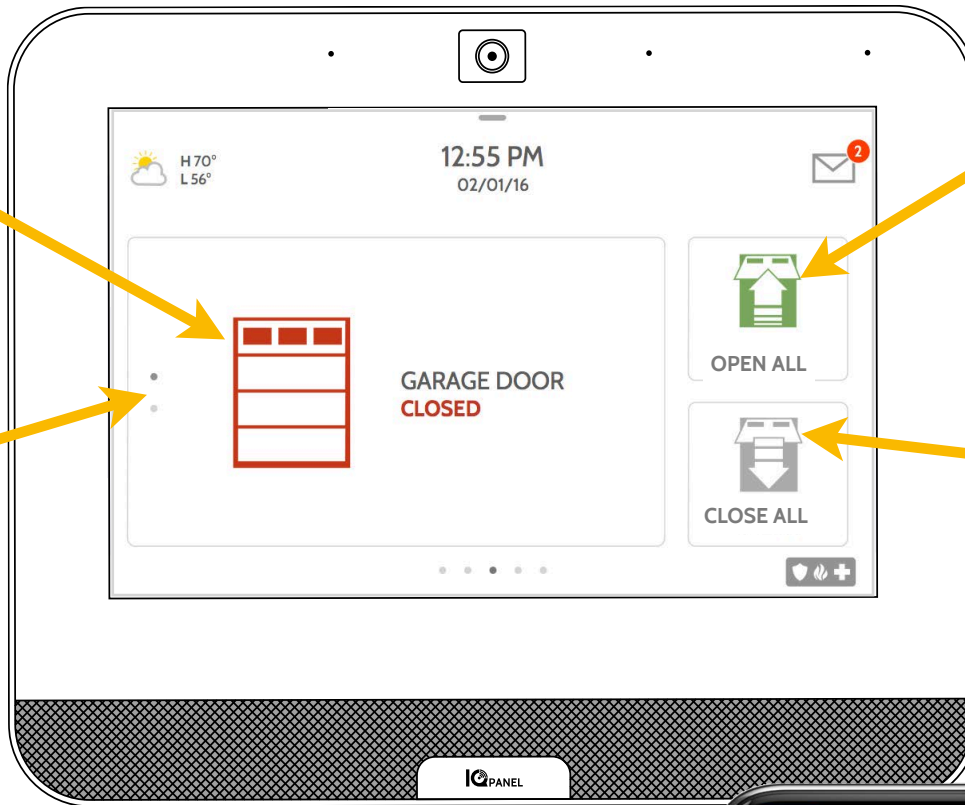
Garage Control

You can add up to 10 Z-Wave overhead garage door controllers to your IQ Panel. This allows you to control the door from your panel and also from your mobile app. Once your first garage opener is added to your system, the garage page will appear. Simply swipe over to access it. If you have more than one overhead garage door swipe up and down to access each one.



Open/Close
Touch the icon to open or close the garage door

Switch
If you have more than one garage door, swipe up and down to access each one.



USING YOUR SYSTEM: LIVE VIEW

Live View

Easily view the live video feed from your Alarm.com video cameras on the 7" panel screen. This page will appear automatically if cameras are added to the account and the authorization has been given on the Alarm.com customer website. Supports live view of up to 40 cameras.

Camera View

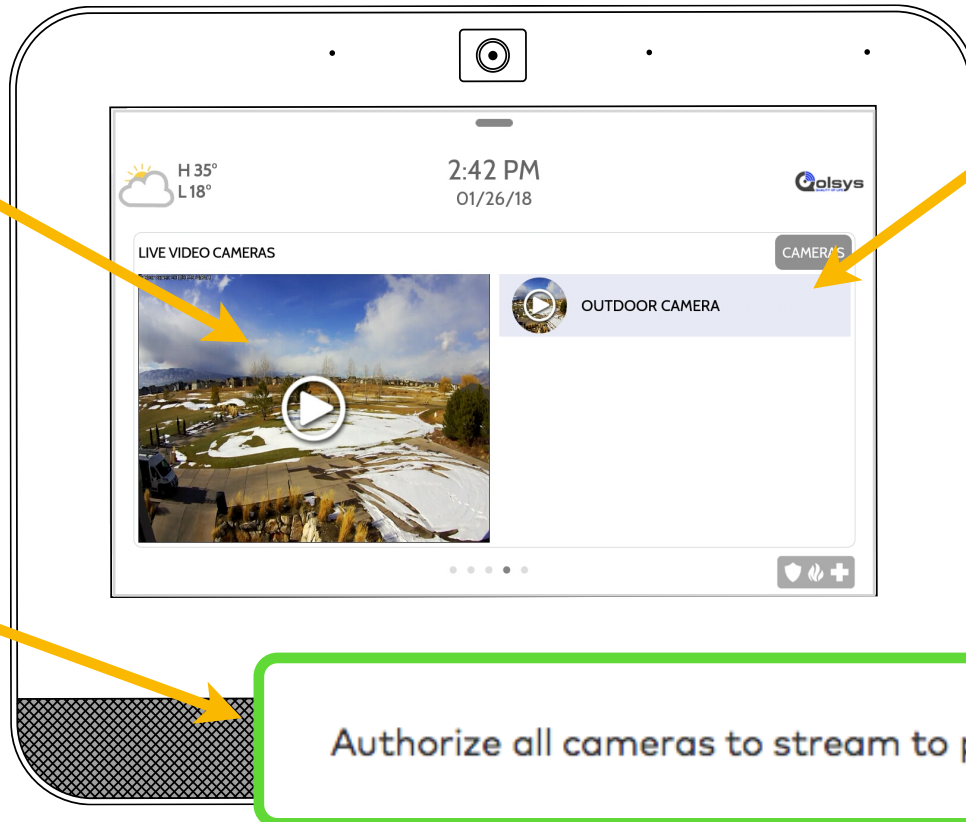
A thumbnail of the camera will be displayed for the highlighted camera. Click the play button to view full screen.

Important Note

Cameras will only push to your panel if you have authorized them to do so from your Alarm.com customer website. This can be found under Video Settings.

Cameras List

All supported cameras that are on the account and have been authorized will show here. Click the camera you would like to view.



Camera View

Full screen mode can be activated by clicking on the play button for each individual camera.

Exit

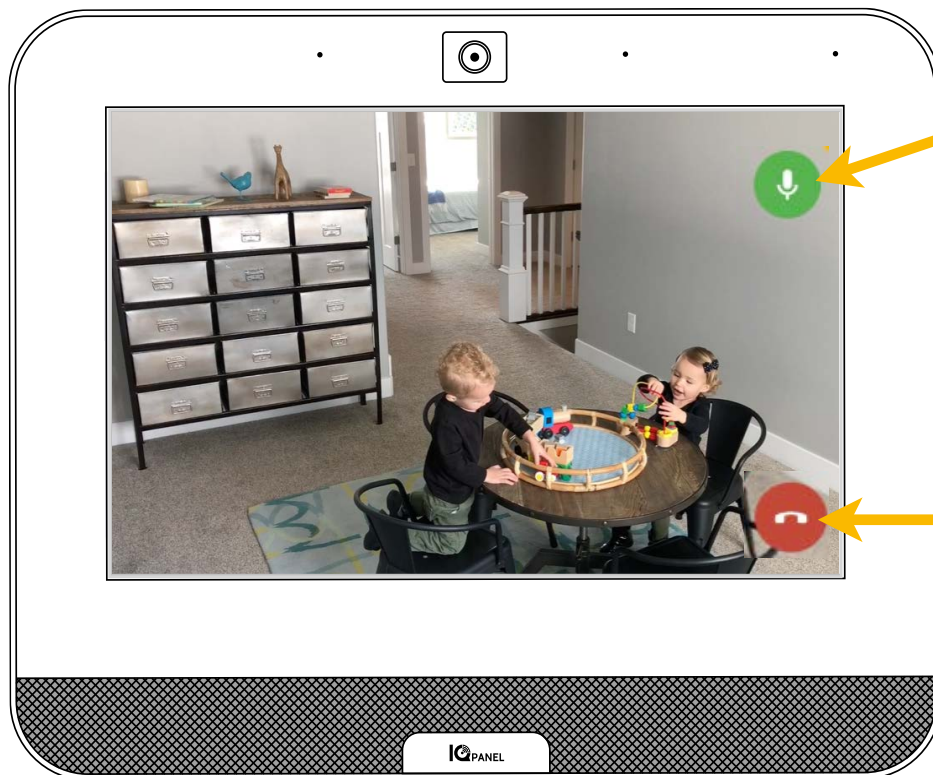
Click on the red X icon to exit full screen mode.



USING YOUR SYSTEM: LIVE VIEW WITH AUDIO

Live View with Audio

Listen in and speak to any room in the house using the Qolsys Live View with Audio feature. This can be done from your mobile app or right from the 7" touch screen. If your camera supports two-way audio, the talk button will automatically appear on the live view page.



Talk

Press and hold while talking to use the two-way audio feature built into your camera.

End

Press this button to exit.

LIVE VIEW ~ with Audio ~ ON PANEL

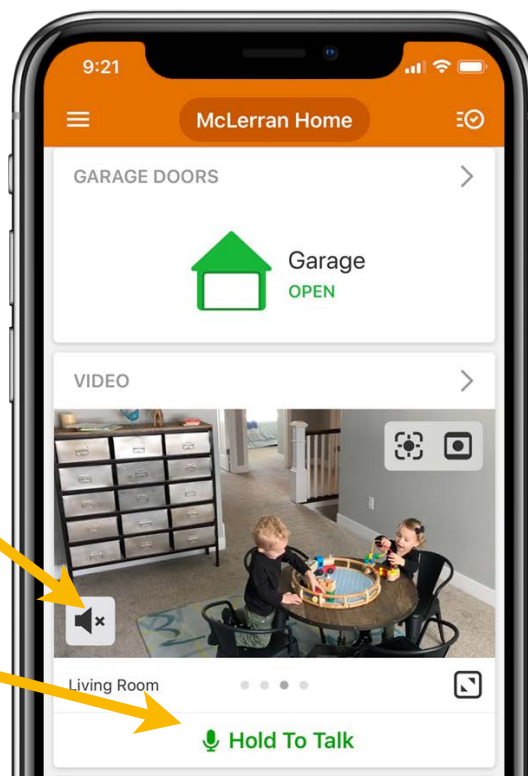


Listen

Press to turn on audio.

Hold To Talk

Press and hold to talk.



USING YOUR SYSTEM: LIVE ANSWER

Live Answer for Doorbell Cameras

You can now talk directly to whoever is at your front door using the new Live Answer feature on your IQ Panel. When your doorbell button is pushed, video with audio will automatically pop up on your 7" touchscreen. You can answer the call, disarm the system and unlock the door all from the same screen. This allows you to verify who is at your front door and if you choose, let them in. Compatible with all Alarm.com doorbell camera models.



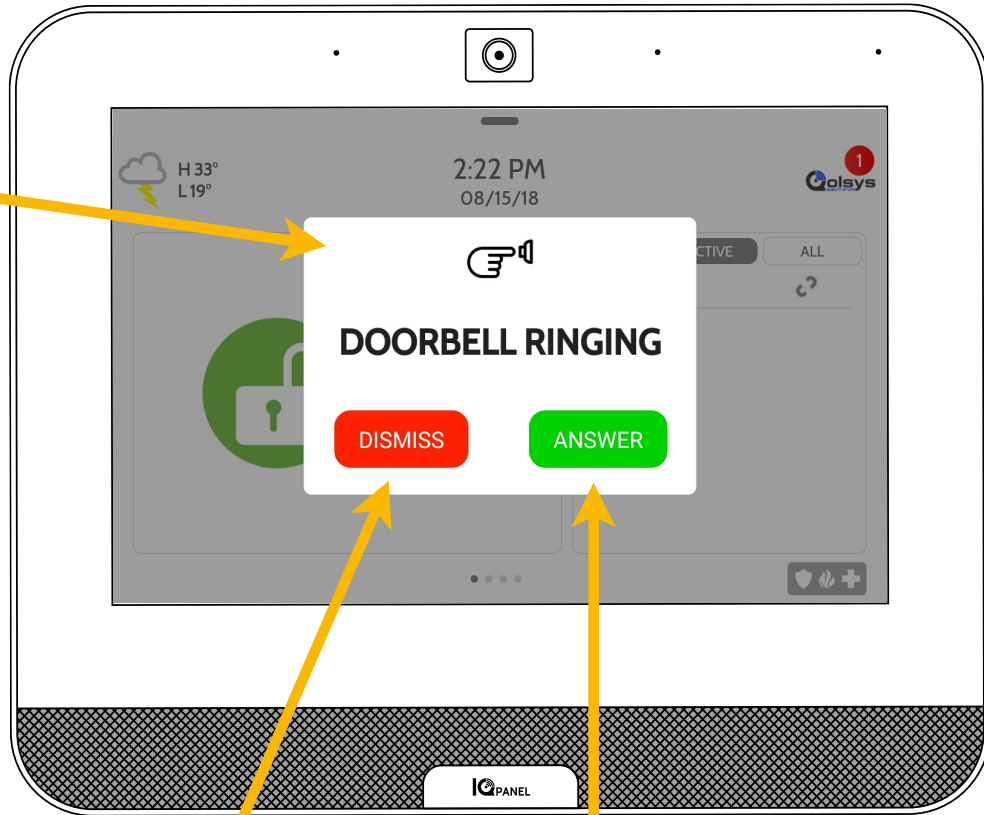
Doorbell Notification

A doorbell notification will display on the screen when someone rings your doorbell. You can choose to answer or dismiss. This is a feature that you have to enable from your Alarm.com website.



Enable Notification

To enable this feature, log in to your Alarm.com website, navigate to your Video Settings, click on Video Device Info then check this box.



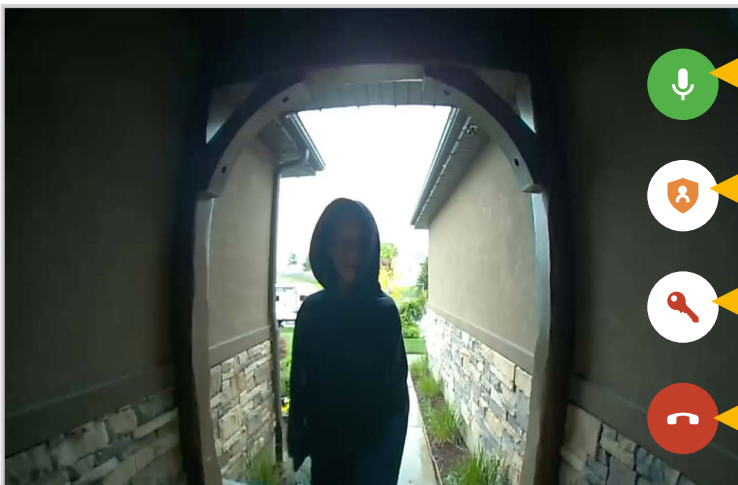
Dismiss

Press to dismiss doorbell.

Answer

Press to answer the doorbell. If answered, the feed from the doorbell will pop up on the screen.

Send button pushed notifications to panel. ?



Talk

Press and hold to talk to whoever is at the doorbell camera.

System Armed

If your system is armed, you can click this button to disarm the system.

Door Lock

If you have a door lock paired, you can click this button to unlock the door.

End

Press this button to end the call and exit Live View mode.

USING YOUR SYSTEM: MANAGE MY SYSTEM

Manage My System

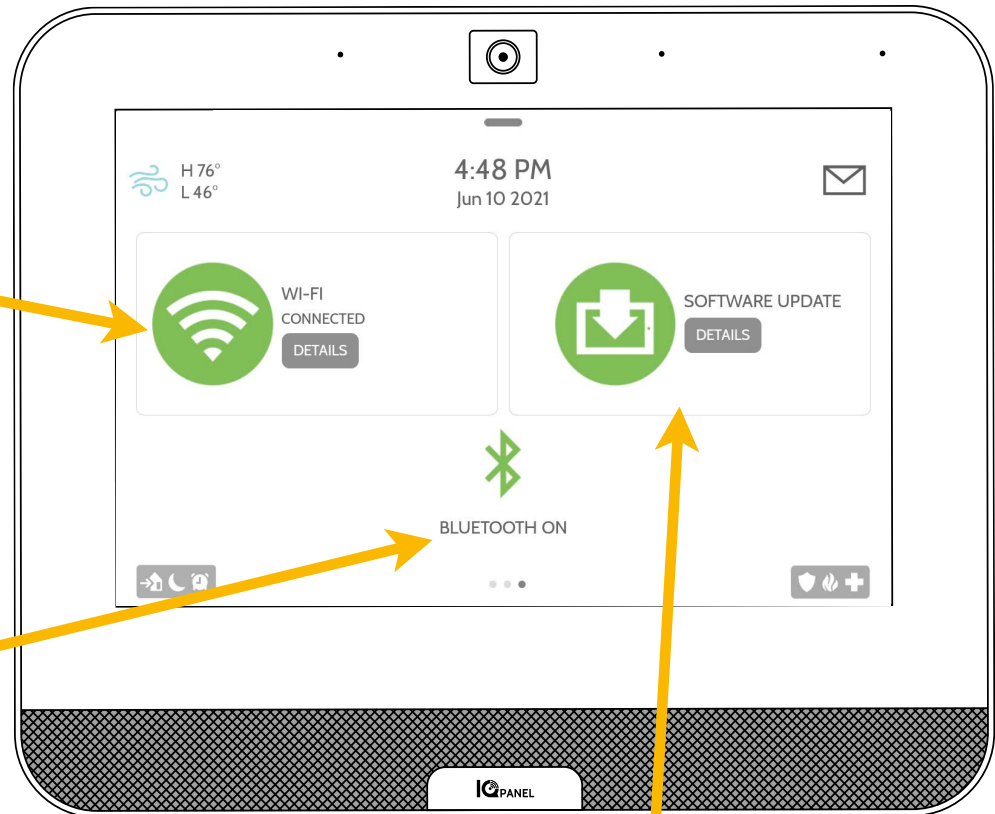
Make sure you are always connected to your home Wi-Fi network and that your software is up to date. You can also manage your Bluetooth connected devices directly from this screen.

Wi-Fi

Touch the icon to check the panel's Wi-Fi connection. The icon will be green if Wi-Fi is connected and red if it is not connected. You can also get quick details about the network you are connected to like the SSID, internet connection and more.

Bluetooth

The icon will be green if Bluetooth is ON and red if Bluetooth is OFF.



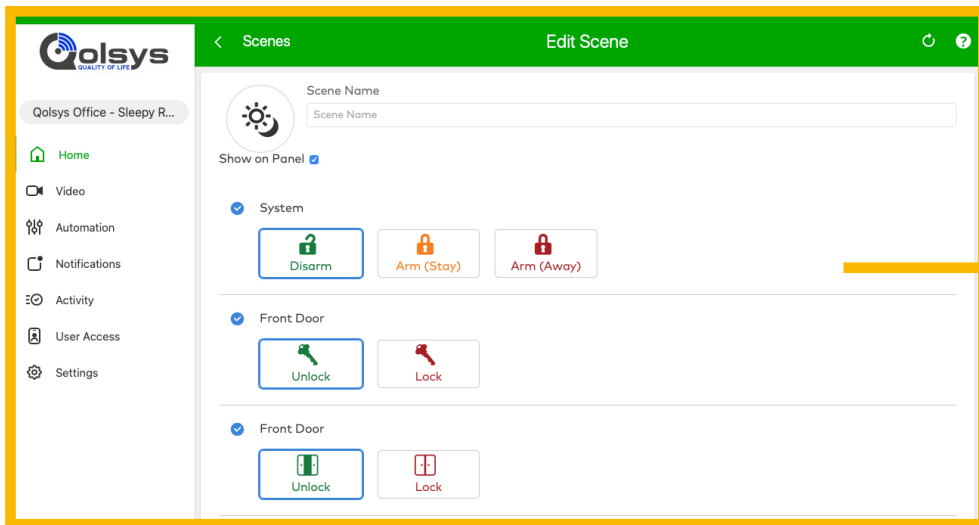
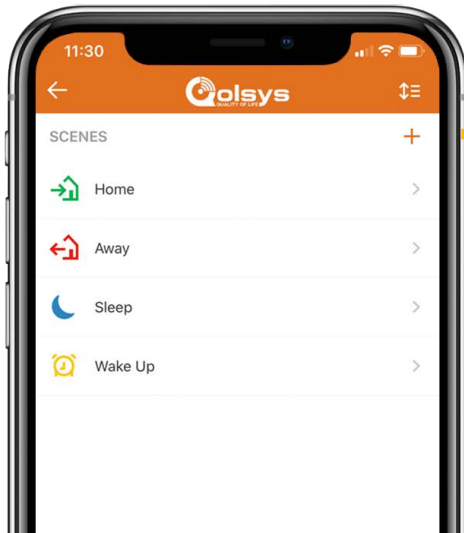
Software Update

Touch the icon to update the system to current software and get details about the last time an update was performed.

OPTIONAL SETTINGS: SCENES

Alarm.com Scenes

If enabled by your dealer, Alarm.com Scenes allow you to control multiple devices with the click of a single button right from your touchscreen. Each option is a multi-device command that coordinates different smart devices to accomplish a complex task. Smart Scenes must be setup and customized from your Alarm.com customer portal before they can be used from the panel.



Alarm.com Scenes

Setup your Scenes from your Alarm.com customer site. When logged in, navigate to the Automation tab. Here, you will be able to build custom scenes that control multiple smart devices within your home.



USING YOUR SYSTEM: PARTITIONS

PARTITIONS

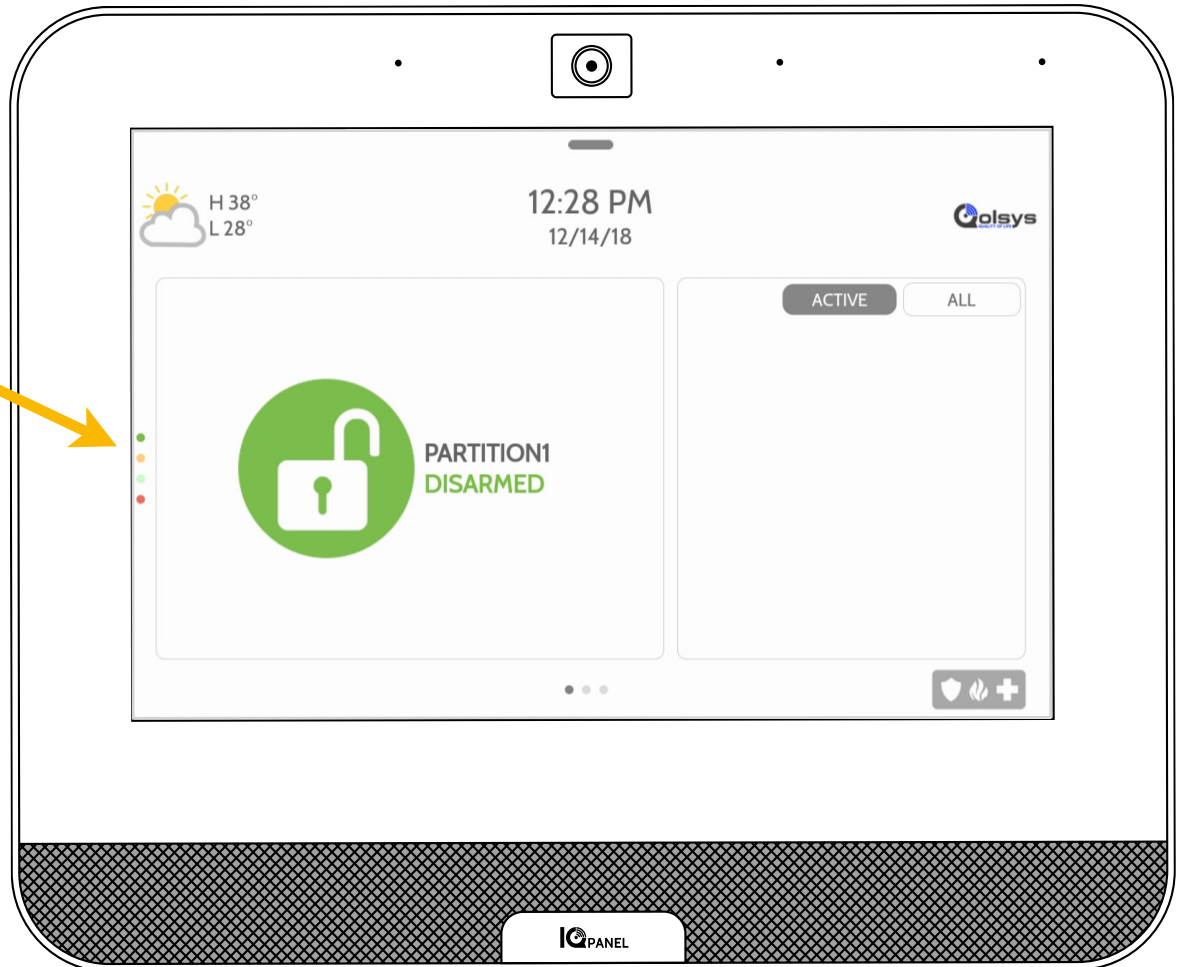
The IQ Panel allows for up to 4 partitions to be programmed. Partitions allows for the creation of zone groups in a home or building so that users can arm some sections of the property while leaving other areas disarmed. Partitioning enables greater personalization and functionality while simplifying installation. Each partition controls its local zone status, alerts and notifications. Any area or zone the needs to be armed or disarmed separately from the rest of the structure can be turned into a partition.

Page Indicator

When separate partitions are enabled, the panel will display additional page indicators on the left side of your panel. These indicate how many partitions can be accessed from this screen.

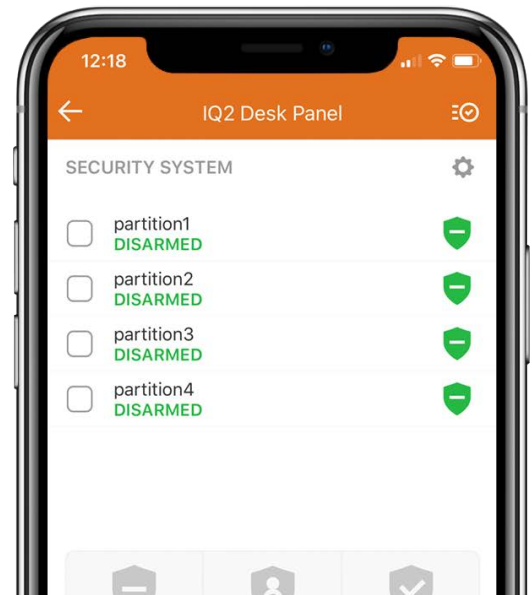
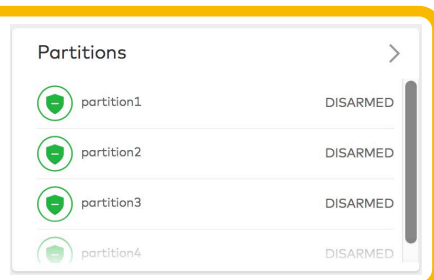
Color Indicator

Each dot will be colored coded to indicate the arming status of that particular partition.
GREEN - Disarmed
ORANGE - Armed Stay
RED - Armed Away

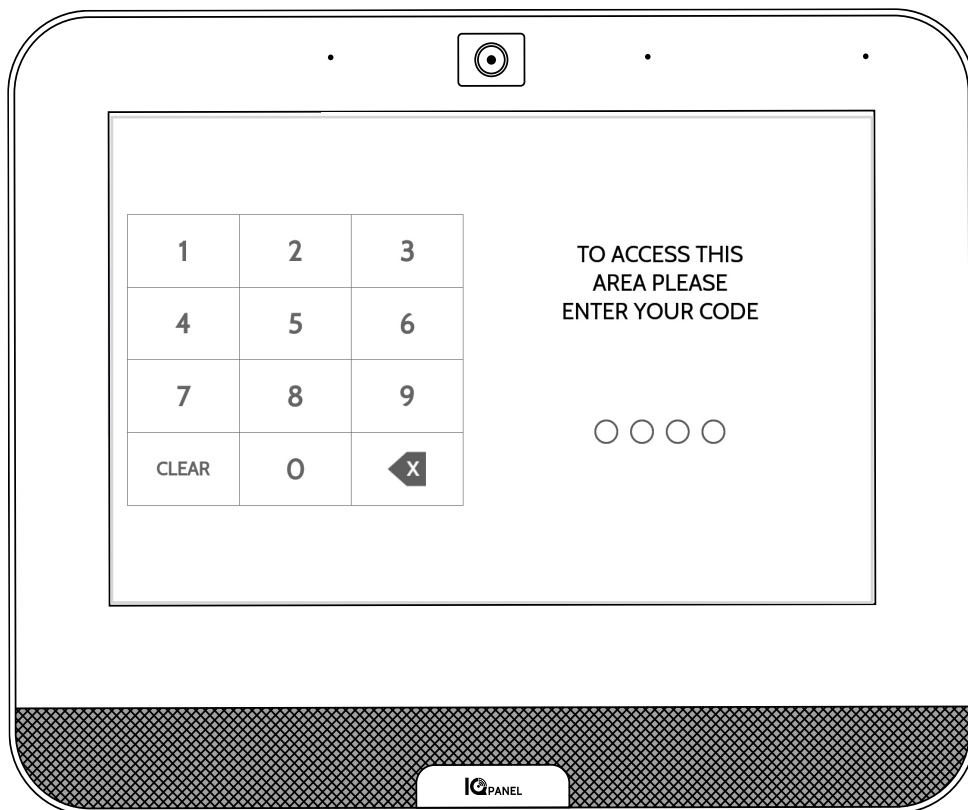


Alarm.com

Partitions control can be accessed from the Alarm.com customer site as well from your mobile app.



USING YOUR SYSTEM: PARTITIONS



Partitions Access

When the panel is locked or the screen times out, you will be required to re-enter your code to gain access. The code you enter will determine which partition you enter. Different codes may gain access to all four partitions at once or to one individual partition.

User Codes

Master codes give full access to Advanced Settings. Because the Master code would be entered here, you will not have to re-enter your code to gain access to the settings menu. User codes can be assigned to give access to arming and disarming functions in a particular partition. To assign single or multiple partitions access to a User code, enter the panel using the Master code and edit permissions in the User Management settings menu.



Important Note: If 6-digit codes are enabled in the panel but not changed in User Management, the panel will add two Zeros to the end of the original code. Example: If original user code is 1234 and 6-digit codes are enabled but the user code isn't changed, the new user code will be 123400.

User Access

When creating a new user, you will be given the option to grant that user access to individual partition or all partitions. Only the number or partitions programmed will show up here. Simply check the box next to the desired option.

The screenshot shows a user management interface with the following fields and options:

- First Name: John
- Last Name: Smith
- User Code: 2345
- Confirm User Code: 2345
- Type: User
- Expiration Date: Unlimited
- Partition Access:
 - PARTITION1
 - PARTITION2
 - PARTITION3
 - PARTITION4

An "ADD USER" button is located at the bottom right of the form.

Exclusions:

You cannot partition Z-Wave or Alarm.com cameras today. This functionality will come at a later date via software update. Global sounds and sirens can be turned on from the Sound menu when partitions are enabled. When global sounds and sirens are turned on, all sounds and sirens will sound across all partitions.

OPTIONAL SETTINGS: WELLNESS

WELLNESS

The Wellness page is an optional page that if enabled by your dealer, allows quick and easy access to your emergency panic for more robust senior care installations. This page replaces the Security and Arming page as your default, home page to simplify use and access to help. The check in and check out feature notifies you when assisted living caregivers arrive and leave so that you have peace of mind knowing that your loved one is getting the care they need and deserve.



Emergency Panic

Check emergency panic button is now the focal point of your home page. When you press or trigger an emergency signal from the IQ Panel, the alarm sounds with the “Emergency” siren and then activates the Two-Way Voice microphone and speaker.

Check in and Check Out

The Check In and Check Out function will help you know when the caregiver comes and goes and sends you their picture. When the Check In or Check Out buttons are pressed, the caregiver will be required to enter their code. This allows you to assign different codes to different caregivers so that you can verify who is showing up and how long they stayed.



FCC REGULATORY INFORMATION

This device complies with Part 15 of the FCC Rules. Operation is subject to the following two conditions: (1) This device may not cause harmful interference, and (2) this device must accept any interference received, including interference that may cause undesired operation.

NOTE: This equipment has been tested and found to comply with the limits for a Class B digital device, pursuant to Part 15 of the FCC Rules. These limits are designed to provide reasonable protection against harmful interference in a residential installation. This equipment generates, uses and can radiate radio frequency energy and, if not installed and used in accordance with the instructions, may cause harmful interference to radio communications. However, there is no guarantee that interference will not occur in a particular installation. If this equipment does cause harmful interference to radio or television reception, which can be determined by turning the equipment off and on, the user is encouraged to try to correct the interference by one or more of the following measures:

- Reorient or relocate the receiving antenna.
- Increase the separation between the equipment and receiver.
- Connect the equipment into an outlet on a circuit different from that to which the receiver is connected.
- Consult the dealer or an experienced radio/TV technician for help.

This equipment complies with radiation exposure limits set forth for uncontrolled environment. The antenna(s) used for this transmitter must be installed to provide a separation distance of at least 20 cm from all persons and must not be collocated or operating in conjunction with any other antenna or transmitter.

IMPORTANT: Changes or modifications not expressly approved by Qolsys, Inc. could void the user's authority to operate the Product.

IC REGULATORY INFORMATION

This device complies with Industry Canada license-exempt RSS standard(s). Operation is subject to the following two conditions: (1) this device may not cause interference, and (2) this device must accept any interference, including interference that may cause undesired operation of the device.

Cautions:

1. Devices operating in the 5150-5250 MHz frequency band are restricted to operate in-door only.
2. Operation in the band 5150-5250 MHz is only for indoor use to reduce the potential for harmful interference to co-channel mobile satellite systems.
3. Users should also be advised that high-power radars are allocated as primary users (i.e. priority users) of the bands 5250-5350 MHz and 5650-5850 MHz and that these radars could cause interference and/or damage to LE-LAN devices.

Cet appareil est conforme aux normes d'exemption de licence RSS d'Industry Canada. Son fonctionnement est soumis aux deux conditions suivantes : (1) cet appareil ne doit pas causer d'interférence et (2) cet appareil doit accepter toute interférence, notamment les interférences qui peuvent affecter son fonctionnement

CAN ICES-3 (B)/NMB-3(B)

Cet équipement est conforme aux limites d'exposition aux rayonnements IC établies pour un environnement non contrôlé. Cet équipement doit être installé et utilisé avec un minimum de 20 cm de distance entre la source de rayonnement, votre corps, et d'autres antennes ou transmetteurs.

Avertissement:

1. Les dispositifs fonctionnant dans la bande 5 150-5 250 MHz sont réservés uniquement pour une utilisation à l'intérieur.
2. Les dispositifs fonctionnant dans la bande 5 150-5 250 MHz sont réservés uniquement pour une utilisation à l'intérieur afin de réduire les risques de brouillage préjudiciable aux systèmes de satellites mobiles utilisant les mêmes canaux
3. De plus, les utilisateurs devraient aussi être avisés que les utilisateurs de radars de haute puissance sont désignés utilisateurs principaux (c.-à-d., qu'ils ont la priorité) pour les bandes 5 250-5 350 MHz et 5 650-5 850 MHz et que ces radars pourraient causer du brouillage et/ou des dommages aux dispositifs LAN-EL.

FCC/IC STATEMENT

Changes or modifications not expressly approved by Qolsys can void the user's authority to operate the Product. This Product has been tested and found to comply with FCC Rules.

This Product generates, uses, and can radiate radio frequency energy and, if not installed and used in accordance with the instructions, may cause harmful interference to radio communications. However, there is no guarantee that interference will not occur in a particular installation.

If this Product does cause harmful interference to radio or television reception, which can be determined by turning the equipment off and on, the user is encouraged to try to correct the interference by one or more of the following measures:

1. Reorient or relocate the receiving antenna.
2. Increase the separation between the Product and receiver.
3. Connect the affected equipment and the Product to separate outlets, on different branch circuits. Consult the dealer or an experienced radio/TV technician for help.

Household Fire Safety Audit

Read this section for important information about fire safety. Most fires occur in the home. To minimize this danger, we recommend that a household fire safety audit be conducted and a fire escape plan be developed.

1. Are all electrical appliances and outlets in a safe condition? Check for frayed cords, overloaded lighting circuits, etc. If you are uncertain about the condition of your electrical appliances or household service, have a professional evaluate these units.
2. Are all flammable liquids stored safely in closed containers in a well-ventilated cool area? Cleaning with flammable liquids should be avoided.
3. Are fire-hazardous materials (e.g., matches) well out of reach of children?
4. Are furnaces and wood-burning appliances properly installed, clean and in good working order? Have a professional evaluate these appliances.

Fire Escape Planning

There is often very little time between the detection of a fire and the time it becomes deadly. It is thus very important that a family escape plan be developed and rehearsed.

1. Every family member should participate in developing the escape plan.

2. Study the possible escape routes from each location within the house. Since many fires occur at night, special attention should be given to the escape routes from sleeping quarters.

3. Escape from a bedroom must be possible without opening the interior door.

Consider the following when making your escape plans:

1. Make sure that all border doors and windows are easily opened. Ensure that they are not painted shut, and that their locking mechanisms operate smoothly.

2. If opening or using the exit is too difficult for children, the elderly or handicapped, plans for rescue should be developed. This includes making sure that those who are to perform the rescue can promptly hear the fire warning signal.

3. If the exit is above the ground level, an approved fire ladder or rope should be provided as well as training in its use.

4. Exits on the ground level should be kept clear. Be sure to remove snow from exterior patio doors in winter; outdoor furniture or equipment should not block exits.

5. Each person should know the predetermined assembly point where everyone can be accounted for (e.g., across the street or at a neighbor's house). Once everyone is out of the building, call the fire department.

6. A good plan emphasizes quick escape. Do not investigate or attempt to fight the fire, and do not gather belongings as this can waste valuable time. Once outside, do not re-enter the house. Wait for the fire department.

7. Write the fire escape plan down and rehearse it frequently so that should an emergency arise, everyone will know what to do. Revise the plan as conditions change, such as the number of people in the home, or if there are changes to the building's construction.

8. Make sure your fire warning system is operational by conducting weekly tests. If you are unsure about system operation, contact your installer.

9. We recommend that you contact your local fire department and request further information on fire safety and escape planning. If available, have your local fire prevention officer conduct an in-house fire safety inspection.

QOLSYS, INC.
END USER LICENSE AGREEMENT

PLEASE READ THE FOLLOWING TERMS AND CONDITIONS CAREFULLY BEFORE INSTALLING OR USING THE SOFTWARE EMBEDDED IN OR USED WITH THE HARDWARE PRODUCTS PROVIDED BY QOLSYS ("QOLSYS PRODUCTS") AND ALL OTHER SOFTWARE AND DOCUMENTATION PROVIDED BY QOLSYS WITH OR FOR USE WITH THE ACCOMPANYING QOLSYS PRODUCTS (COLLECTIVELY, THE "SOFTWARE").

THE TERMS AND CONDITIONS OF THIS END USER LICENSE AGREEMENT ("AGREEMENT") GOVERN USE OF THE SOFTWARE PROVIDED BY QOLSYS, INC. ("QOLSYS").

Qolsys is willing to license the Software to you only upon the condition that you accept all the terms contained in this Agreement. If you install or use the Software, then you have indicated that you understand this Agreement and accept all of its terms. If you are accepting the terms of this Agreement on behalf of a company or other legal entity, you represent and warrant that you have the authority to bind that company or other legal entity to the terms of this Agreement, and, in such event, "you" and "your" will refer to that company or other legal entity. If you do not accept all the terms of this Agreement, then Qolsys is unwilling to license the Software to you, and you are not authorized to use the Software. "Documentation" means Qolsys' then current generally available documentation for use and operation of the Software.

1. **Grant of License.** Conditioned upon your compliance with the terms and conditions of this Agreement, Qolsys grants you a revocable non-exclusive, non-transferable and non-sublicensable license to use the Software, solely as embedded in or pre-installed on the Qolsys Products and solely for your non-commercial personal use. Qolsys reserves all rights in the Software not expressly granted to you in this Agreement. As a condition to this license, Qolsys may collect, use and share with its engineering and marketing partners certain information about your Qolsys Products and how they are used.
2. **Restrictions.** Your use of the Software must be in accordance with its Documentation. You will be solely responsible for ensuring your use of the Software is in compliance with all applicable foreign, federal, state and local laws, rules and regulations. Except for any rights provided with respect to included open source software or as expressly specified in this Agreement, you may not: (a) copy, modify (including but not limited to adding new features or otherwise making adaptations that alter the functioning of the Software), or create derivative works of the Software; (b) transfer, sublicense, lease, lend, rent or otherwise distribute the Software to any third party; or (c) otherwise use the Software in a way not permitted by the terms of this Agreement. You acknowledge and agree that portions of the Software, including but not limited to the source code and the specific design and structure of individual modules or programs, constitute or contain trade secrets of Qolsys and its licensors. Accordingly, you agree not to disassemble, decompile or reverse engineer the Software, in whole or in part, or permit or authorize a third party to do so, except to the extent such activities are expressly permitted by law notwithstanding this prohibition. The Software may be subject to additional restrictions and conditions on use as specified in the Documentation, which additional restrictions and conditions are hereby incorporated into and made a part of this Agreement. Under no circumstances will Qolsys be liable or responsible for any use, or any results obtained by the use, of the services in conjunction with any services, software, or hardware that are not provided by Qolsys. All such use will be at your sole risk and liability.
3. **Ownership.** The copy of the Software is licensed, not sold. You own the Qolsys Product in which the Software is embedded, but Qolsys and its licensors retain ownership of the copy of the Software itself, including all intellectual property rights therein. The Software is protected by United States copyright law and international treaties. You will not delete or in any manner alter the copyright, trademark, and other proprietary rights notices or markings appearing on the Software as delivered to you. This Agreement does not grant you any rights in connection with any trademarks or service marks of Qolsys, its affiliates or its suppliers.
4. **Maintenance, Support and Updates.** Qolsys is under no obligation to maintain, support or update the Software in any way, or to provide updates or error corrections. However, if any bug fixes, maintenance releases or updates are provided to you by Qolsys, its dealers or a third party, such fixes, releases and updates are and shall be considered "Software", and will be subject to the terms of this Agreement, unless you receive a separate license from Qolsys for that release or update that supersedes this Agreement.
5. **Subsequent Agreement.** Qolsys may also supersede this Agreement with a subsequent Agreement pursuant to providing you with any future component, release, upgrade or other modification or addition to the Software. Similarly, to the extent that the terms of this Agreement conflict with any prior Agreement or other agreement between you and Qolsys regarding the Software, the terms of this Agreement shall prevail.
6. **Term.** The license granted under this Agreement remains in effect for a period of 75 years, unless earlier terminated in accordance with this Agreement. You may terminate the license at any time by destroying all copies of the Software in your possession or control. The license granted under this Agreement will automatically terminate, with or without notice from Qolsys, if you breach any term of this Agreement. In addition, either party may, in its sole discretion, elect to terminate this Agreement on written notice to the other party upon the bankruptcy or insolvency of the other party or upon the bankruptcy or insolvency of the other party upon the commencement of any voluntary or involuntary winding up, or upon the filing of any petition seeking the winding up of the other party. Upon termination or expiration of this Agreement, the license granted in Section will automatically terminate and you must at Qolsys' option, either promptly destroy or return to Qolsys all copies of the Software in your possession or control. On Qolsys' request, you will provide Qolsys with a signed written statement confirming that the Software has been permanently removed from your systems.
7. **Limited Warranty.** THE SOFTWARE IS PROVIDED "AS IS", WITHOUT WARRANTY OF ANY KIND. QOLSYS DISCLAIMS ALL WARRANTIES AND CONDITIONS, EXPRESS OR IMPLIED, INCLUDING BUT NOT LIMITED TO ANY IMPLIED WARRANTIES AND CONDITIONS OF MERCHANTABILITY, FITNESS FOR A PARTICULAR PURPOSE AND NON-INFRINGEMENT, AND ANY WARRANTIES AND CONDITIONS ARISING OUT OF COURSE OF DEALING OR USAGE OF TRADE. NO ADVICE OR INFORMATION, WHETHER ORAL OR WRITTEN, OBTAINED FROM QOLSYS OR ELSEWHERE WILL CREATE ANY WARRANTY OR CONDITION NOT EXPRESSLY STATED IN THIS AGREEMENT. QOLSYS DOES NOT WARRANT THAT THE SOFTWARE WILL MEET YOUR EXPECTATIONS OR REQUIREMENTS, THAT THE OPERATION OF THE SOFTWARE WILL BE ERROR-FREE OR UNINTERRUPTED, OR THAT ALL SOFTWARE ERRORS WILL BE CORRECTED.
8. **Limitation of Liability.** QOLSYS' TOTAL LIABILITY TO YOU FROM ALL CAUSES OF ACTION AND UNDER ALL THEORIES OF LIABILITY WILL BE LIMITED TO \$100. IN NO EVENT WILL QOLSYS BE LIABLE TO YOU FOR ANY SPECIAL, INCIDENTAL, EXEMPLARY, PUNITIVE OR CONSEQUENTIAL DAMAGES (INCLUDING LOSS OF PROPERTY OR LOSS OF DATA OR BUSINESS INTERRUPTION) OR FOR THE COST OF PROCURING SUBSTITUTE PRODUCTS ARISING OUT OF OR IN CONNECTION WITH THIS AGREEMENT OR THE EXECUTION OR PERFORMANCE OF THE SOFTWARE, WHETHER SUCH LIABILITY ARISES FROM ANY CLAIM BASED UPON CONTRACT, WARRANTY, TORT (INCLUDING NEGLIGENCE), STRICT LIABILITY OR OTHERWISE, AND WHETHER OR NOT QOLSYS HAS BEEN ADVISED OF THE POSSIBILITY OF SUCH LOSS OR DAMAGE. THE FOREGOING LIMITATIONS WILL SURVIVE AND APPLY EVEN IF ANY LIMITED REMEDY SPECIFIED IN THIS AGREEMENT IS FOUND TO HAVE FAILED OF ITS ESSENTIAL PURPOSE. Some jurisdictions do not allow the limitation or exclusion of liability for incidental or consequential damages, so the above limitation or exclusion may not apply to you.
9. **U.S. Government End Users.** The Software and Documentation are "commercial items" as that term is defined in FAR 2.101, consisting of "commercial computer software" and "commercial computer software documentation," respectively, as such terms are used in FAR 12.212 and DFARS 227.7202. If the Software and Documentation are being acquired by or on behalf of the U.S. Government, then, as provided in FAR 12.212 and DFARS 227.7202-1 through 227.7202-4, as applicable, the U.S. Government's rights in the Software and Documentation will be only those specified in this Agreement.
10. **Export Law.** You agree to comply fully with all U.S. export laws and regulations to ensure that neither the Software nor any technical data related thereto nor any direct product thereof are exported or re-exported directly or indirectly in violation of, or used for any purposes prohibited by, such laws and regulations.
11. **Open Source and Other Third Party Code.** Portions of the Software may be subject to certain third party license agreements governing the use, copying, modification, redistribution and warranty of those portions of the Software, including what is commonly known as "open source" software. Such portions of the Software are governed solely by the terms of such other license, and no warranty is provided under this Agreement for open source software. By using the Software you are also agreeing to be bound to the terms of such third party licenses. If provided for in the applicable third party license, you may have a right to reverse engineer such software or receive source code for such software for use and distribution in any program that you create, so long as you in turn agree to be bound to the terms of the applicable third party license, and your programs are distributed under the terms of that license. If applicable, a copy of such source code may be obtained free of charge by contacting your Qolsys representative. This Agreement shall not be construed to limit the rights you may otherwise have with respect to the Linux operating system and other third party technology or software licensed under open source or similar license terms. Please see our website at www.qolsys.com for a list of those components and their respective license terms.
12. **Confidentiality.** You acknowledge that the ideas, methods, techniques, and expressions thereof contained in the Software (collectively, "Qolsys Confidential Information") constitute confidential and proprietary information of Qolsys, the unauthorized use or disclosure of which would be damaging to Qolsys. You agree to hold the Software and Qolsys Confidential Information in strictest confidence, disclosing information only to permitted individual employees who are required to have access in order to perform under this Agreement and to use such information only for the purposes authorized by this Agreement. You are responsible for and agree to take all reasonable precautions, by instruction, agreement or otherwise, to ensure that your employees who are required to have access to such information in order to perform under this Agreement, are informed that the Software and Qolsys Confidential Information are confidential proprietary information belonging to Qolsys and to ensure that they make no unauthorized use or disclosure of such information. You may disclose Qolsys Confidential Information if you are required to do so pursuant to a governmental agency, a court of law or to any other competent authority so long as you provide Qolsys with written notice of such request prior to such disclosure and cooperate with Qolsys to obtain a protective order. Prior to disposing of any media reflecting or on which is stored or placed any Software, you will ensure any Software contained on the media has been securely erased or otherwise destroyed. You recognize and agree a remedy at law for damages will not be adequate to fully compensate Qolsys for the breach of Sections 1, 2, 3 or 12. Therefore, Qolsys will be entitled to temporary injunctive relief against you without the necessity of proving actual damages and without posting bond or other security. Injunctive relief will in no way limit any other remedies Qolsys may have as a result of breach by you of the foregoing Sections or any other provision of this Agreement.
13. **Data Collection and Use.** You acknowledge and agree that the Software and/or hardware used in connection with the Software may collect data resulting from or otherwise relating to your use of the Software and/or hardware ("Data") for purposes of providing you with service/product recommendations, benchmarking, energy monitoring, and maintenance and support. Qolsys shall be the exclusive owner of all Data. Qolsys shall have the right to de-identify your Data so that it does not identify you directly or by inference (the "De-Identified Data"). Qolsys shall have the right and ability to use the De-Identified Data for its business purposes, including improvement of the Software, research, product development, product improvement and provision of products and services to Qolsys's other customers (collectively, "Qolsys's Business Purposes"). In the event Qolsys does not own or is unable to own the De-Identified Data as a result of applicable law, or contractual commitments or obligations, you grant Qolsys a non-exclusive, perpetual, irrevocable, fully-paid-up, royalty free license to use, copy, distribute, and otherwise exploit statistical and other data derived from your use of the De-Identified Data for Qolsys's Business Purposes.
14. **Feedback.** You may provide suggestions, comments, or other feedback (collectively, "Feedback") to Qolsys with respect to its products and services, including the Software. Feedback is voluntary and Qolsys is not required to hold it in confidence. Qolsys may use Feedback for any purpose without obligation of any kind. To the extent a license is required under your intellectual property rights to make use of the Feedback, you grant Qolsys an irrevocable, non-exclusive, perpetual, world-wide, royalty-free license to use the Feedback in connection with Qolsys's business, including enhancement of the Software, and the provision of products and services to Qolsys's customers.
15. **Government Restrictions.** The Software may be subject to additional restrictions and conditions on use as specified by local, state and/or federal laws, rules and regulations. It is up to you to determine what laws, rules and/or regulations apply to your use of the Software, and to comply with such laws, rules and/or regulations when using the Software.
16. **General.** This Agreement will be governed by and construed in accordance with the laws of the State of California, without regard to or application of conflict of laws rules or principles. The United Nations Convention on Contracts for the International Sale of Goods will not apply. You may not assign or transfer this Agreement or any rights granted hereunder, by operation of law or otherwise, without Qolsys' prior written consent, and any attempt by you to do so, without such consent, will be void. Qolsys has the right to assign this Agreement unconditionally. Except as expressly set forth in this Agreement, the exercise by either party of any of its remedies under this Agreement will be without prejudice to its other remedies under this Agreement or otherwise. The failure by either party to enforce any provision of this Agreement will not constitute a waiver of future enforcement of that or any other provision. If any provision of this Agreement is held to be unenforceable or invalid, that provision will be enforced to the maximum extent possible, and the other provisions will remain in full force and effect. This Agreement is the complete and exclusive understanding and agreement between the parties regarding its subject matter, and supersedes all proposals, understandings or communications between the parties, oral or written, regarding its subject matter, unless you and Qolsys have executed a separate agreement governing use of the Software. Any terms or conditions contained in your purchase order or other communications that are inconsistent with or in addition to the terms and conditions of this Agreement are hereby rejected by Qolsys and will be deemed null.